



February 1995
The Labour Force
New South Wales and
Australian Capital Territory

Catalogue No. 6201.1

Two thick, black, horizontal bars with diagonal ends, located at the bottom of the page, mirroring the design of the bars flanking the logo.

EMBARGOED UNTIL 11.30 A.M. 10 APRIL 1995

**THE LABOUR FORCE
NEW SOUTH WALES AND
AUSTRALIAN CAPITAL TERRITORY
February 1995**

GREG BRAY
Deputy Commonwealth Statistician

© Commonwealth of Australia 1995

CONTENTS

	<i>Page</i>
Summary of findings—	
.. New South Wales	1
.. Australian Capital Territory	4
Graphs	
.. <i>Unemployment rate, New South Wales and Australia, February 1995</i>	1
.. <i>Monthly change in number of persons employed, New South Wales and Australia, February 1983 – February 1995</i>	1
.. <i>Unemployment rate, New South Wales and Australia, February 1983 – February 1995</i>	1
.. <i>Unemployment rate. Regions of New South Wales, February 1995</i>	2
.. <i>Average duration of unemployment, New South Wales, February 1993 – February 1995</i>	3
.. <i>Employed persons, Australian Capital Territory, February 1983 – February 1995</i>	4
.. <i>Unemployment rate, Australian Capital Territory and Australia, February 1983 – February 1995</i>	4
.. <i>Unemployment rate by age, Australian Capital Territory, February 1993 – February 1995</i>	4
.. <i>Average duration of unemployment, Australian Capital Territory, February 1993 – February 1995</i>	5

NEW SOUTH WALES

LABOUR FORCE STATUS

<i>Table</i>		
	Labour force status, New South Wales—	
1.	Original series	7
2.	Seasonally adjusted and trend series	8
3.	Age	10
4.	Aged 15–24 (single years) by full-time educational attendance	11
5.	Family status	12

Graphs		
	Trend series, New South Wales, February 1983 – February 1995—	
..	Employed males	9
..	Employed females	9
..	Unemployed males	9
..	Unemployed females	9
..	Male unemployment rate	9
..	Female unemployment rate	9
..	Male participation rate	9
..	Female participation rate	9
	Persons aged 15–19 in the labour force, New South Wales: Full-time attendance at school or a tertiary educational institution, February 1993 – February 1995—	
..	Employed	10
..	Unemployed	10

EMPLOYED PERSONS

EMPLOYED PERSONS	
<i>Table</i>	
	Employed persons, New South Wales—
6.	Status in employment 12
7.	Age 13
8.	Industry 14
9.	Occupation 16

<i>Graphs</i>		
..	<i>Annual change in employment by age, New South Wales, February 1994 – February 1995</i>	13
..	<i>Employment by industry division, New South Wales, February 1995</i>	15
..	<i>Annual change in employment by occupation group, New South Wales, February 1994 – February 1995</i>	17

CONTENTS—continued

	<i>Page</i>
UNEMPLOYED PERSONS	
<i>Table</i>	
	Unemployed persons, New South Wales—
10.	Age 18
11.	Unemployment rate by age 18
12.	Industry and occupation of last full-time job 19
13.	Duration of unemployment 20
14.	Unemployment rate by birthplace and period of arrival 20
15.	Duration of unemployment by age 21
<i>Graphs</i>	
..	<i>Unemployment rate by age, New South Wales, February 1993 – February 1995</i> 19
..	<i>Unemployment rate by period of arrival of overseas born, New South Wales, February 1995</i> 20
REGIONAL DATA	
<i>Table</i>	
	Labour force status—
16.	Sydney Major Statistical Region 22
17.	Balance of New South Wales Major Statistical Region 23
18.	Regions of New South Wales 24
	Employed persons—
19.	Industry and occupation, Sydney Major Statistical Region and Balance of New South Wales Major Statistical Region 32
AUSTRALIAN CAPITAL TERRITORY	
LABOUR FORCE STATUS	
<i>Table</i>	
	Labour force status, Australian Capital Territory—
20.	Original series 33
21.	Trend series 34
22.	Age 36
23.	Non-institutionalised persons: Birthplace and year of arrival 36
<i>Graphs</i>	
..	<i>Trend series, Australian Capital Territory, February 1983 – February 1995—</i>
..	<i>Employed males</i> 35
..	<i>Employed females</i> 35
..	<i>Unemployed males</i> 35
..	<i>Unemployed females</i> 35
..	<i>Male unemployment rate</i> 35
..	<i>Female unemployment rate</i> 35
..	<i>Male participation rate</i> 35
..	<i>Female participation rate</i> 35

CONTENTS—continued

	<i>Page</i>
EMPLOYED PERSONS	
<i>Table</i>	
24.	37
Employed persons, industry and occupation, Australian Capital Territory	
<i>Graph</i>	
..	37
<i>Employment by industry division, Australian Capital Territory, February 1995</i>	
UNEMPLOYED PERSONS	
<i>Table</i>	
25.	38
Long-term unemployment, Australian Capital Territory	
<i>Graph</i>	
..	38
<i>Long-term unemployed as a proportion of total unemployed, Australian Capital Territory, February 1993 – February 1995</i>	
..	39
Labour force supplementary topics	
..	40
Explanatory notes	
..	43
Technical note on data reliability	
Appendix	
..	48
Regions of New South Wales and their statistical local areas	
<i>Maps</i>	
..	50
<i>Regions of New South Wales</i>	
..	50
<i>Regions of Sydney Major Statistical Region</i>	

INQUIRIES	<ul style="list-style-type: none"> • <i>for further information about statistics in this publication and the availability of related unpublished statistics, contact the following—</i> ABS NSW office — Elizabeth Scrivener on Sydney (02) 268 4212 or Client Services Statistical Support on Sydney (02) 268 4398 ABS ACT office — Bill Syme on Canberra (06) 207 0285 • <i>for information about other ABS statistics and services please refer to the back cover of this publication.</i>
------------------	--

SUMMARY OF FINDINGS

New South Wales

Seasonally adjusted estimates

In February 1995 there were 2,719,800 people **employed** in NSW. This was an increase of 99,900 since February 1994.

The **unemployment rate** in February 1995 was 8.7%, almost the same as in the previous four months. The rate was 8.4% for males and 9.2% for females. The NSW rates for males and persons were less than the corresponding Australian rates of 9.0% and 8.9% respectively but the rate for females exceeded the Australian rate of 8.9%.

The number of **unemployed** people was estimated at 260,700 in February 1995. This was a little higher than in January but 33,900 lower than in February 1994. Males represented 55% of the unemployed, compared with 61% in February 1994.

The **participation rate** stood at 62.4% overall, with a rate of 73.2% for males and 52.0% for females.

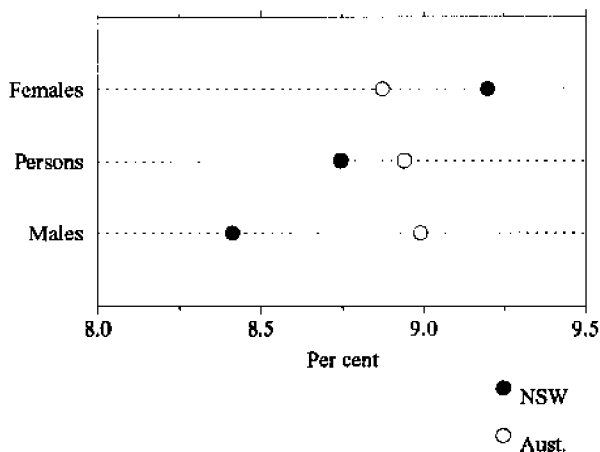
In February 1995 the size of the **labour force** was estimated at 2,980,600 people. This was an increase of 66,100 over the previous 12 months.

LABOUR FORCE, NSW
(Seasonally adjusted)

	<i>Labour force</i>			
	<i>Employed</i> (<i>'000</i>)	<i>Unemp- loyed</i> (<i>'000</i>)	<i>Unemp- loyment rate</i> (<i>per cent</i>)	<i>Partici- pation rate</i> (<i>per cent</i>)
1994— February	2,619.9	294.6	10.1	61.7
1994— December	2,703.7	259.0	8.7	62.1
1995 January	2,719.4	257.5	8.6	62.4
February	2,719.8	260.7	8.7	62.4
Annual change (a)	3.8%	-11.5%	-1.4	0.7

(a) For rates, the annual change is expressed as the difference in percentage points.

UNEMPLOYMENT RATE, FEBRUARY 1995
(Seasonally adjusted)



Trend series estimates

The number of **employed** people in NSW was 2,719,200 in February 1995. The trend estimate of employed people has increased each month since March 1993.

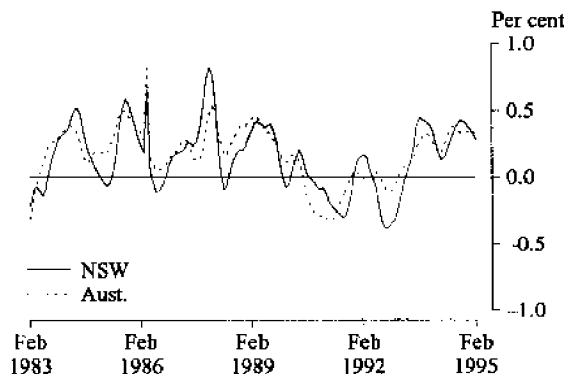
The trend **unemployment rate** was 8.7% in February 1995 compared to 10.2% in February 1994. The trend, which had been falling since March 1993, has been steady since December 1994. The February 1995 rate was the lowest unemployment rate since May 1991.

The trend estimate of **unemployed** people in February 1995 was 257,900. There has been a decrease each month since September 1993 and a decrease of 40,000 in the 12 months to February 1995.

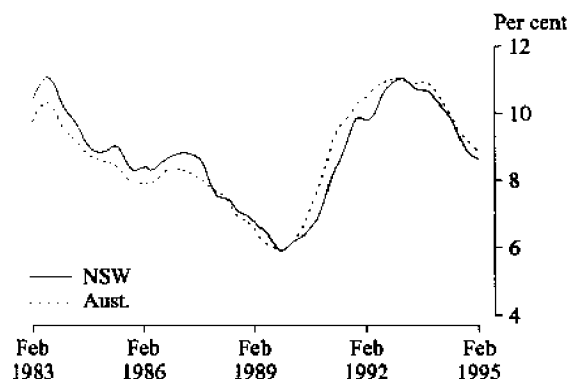
The trend series **participation rate** was 62.3% in February 1995 compared to 61.7% in February 1994.

In February 1995 the trend estimate of the **labour force** stood at 2,977,100. The estimate has increased each month since April 1993 and has increased by 59,700 since February 1994.

MONTHLY CHANGE IN NUMBER OF PERSONS EMPLOYED
(Trend)



UNEMPLOYMENT RATE
(Trend)



Source: *The Labour Force, Australia* (6203.0)

Regions of NSW

While the Labour Force Survey is designed primarily to produce reliable estimates at the national and State/Territory level, it also delivers estimates for a number of regions within States.

As with national and State estimates, regional labour force estimates are subject to sampling error. Since estimates for regions are components of corresponding estimates at the State level — and are thus based on a considerably smaller sample size — they are subject to higher relative standard errors. Care should therefore be taken in interpretation of regional estimates, particularly month to month movements. Tables of standard errors are included in the Technical Note on page 43–47 of this publication.

Sydney

In February 1995 the estimate of the number of people **employed** in the Sydney Major Statistical Region (MSR) was 1,758,500. This was an increase of 28,000 in the 12 months since February 1994.

In February 1995 the **unemployment rate** was 9.1%, a decrease of 0.8 percentage points over 12 months, but a rise of 1.4 percentage points since November 1994.

The unemployment rates within Sydney MSR varied from 18.3% in Fairfield–Liverpool Statistical Region (SR) to 4.3% in Hornsby–Ku-ring-gai SR.

The **participation rate** for Sydney MSR was 64.3% compared to 64.5% a year earlier. The rate for males was 74.9% and for females 54.2%. Gosford–Wyong SR

recorded the lowest participation rate of 52.2% while the highest rate was 69.4% in Outer Western Sydney SR.

Balance of NSW

In February 1995 the number of **employed** people in this area of NSW was 941,200, an increase of 71,100 over 12 months.

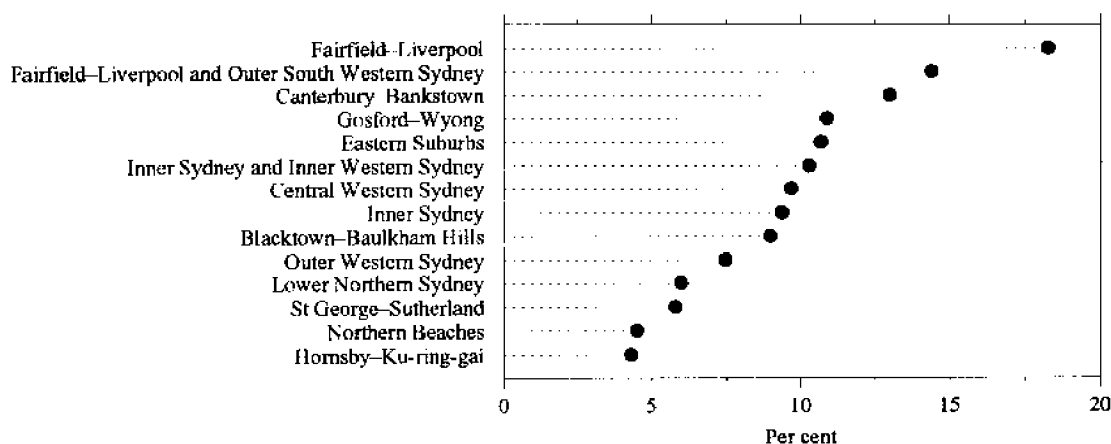
In February 1995 the **unemployment rate** was 10.8%, a decrease from 13.5% a year earlier, but a rise from 9.3% in November 1994.

The unemployment rate varied from 7.7% in Murray–Murrumbidgee SR to 13.2% in Illawarra SR.

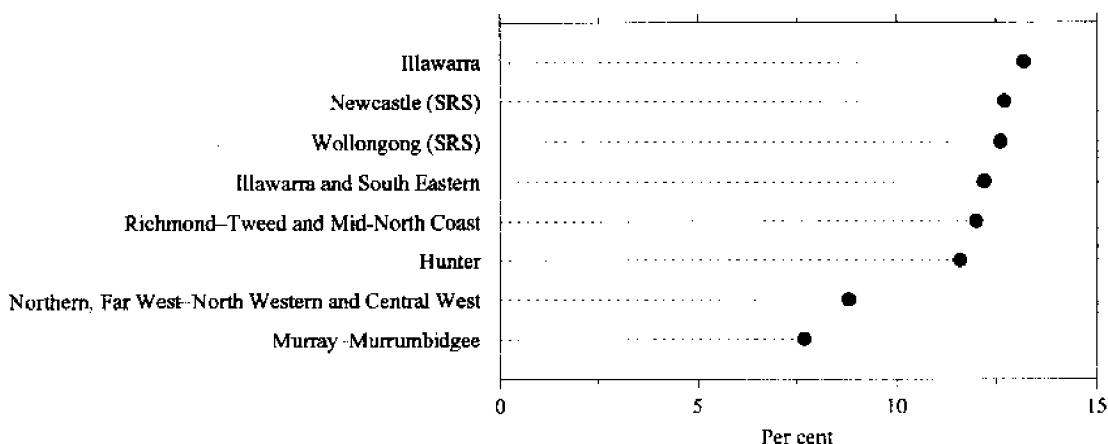
The participation rate for the Balance of NSW MSR was 59.6% in February 1995. The rate was 70.8% for males and 48.6% for females.

UNEMPLOYMENT RATE, REGIONS OF NSW, FEBRUARY 1995

Sydney MSR



Balance of NSW MSR



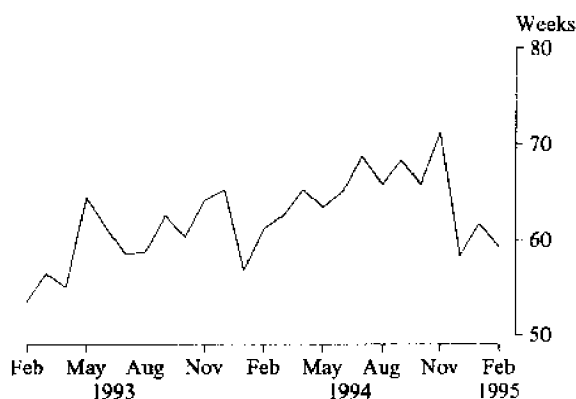
Duration of unemployment

In February 1995 the **long term unemployed** (52 weeks and over) represented 37% of all unemployed. This compared with 40% a year earlier.

The average duration of unemployment was 59.2 weeks in February 1995, having fallen from a peak of 71.2 weeks in November 1994. In February 1994, the average was 61.2 weeks.

Average duration of unemployment increased with age reaching an average of 94.0 weeks for people aged 45 years and over.

AVERAGE DURATION OF UNEMPLOYMENT, NSW



Age

Between February 1994 and February 1995, an increase in employment was recorded by all age groups except 55–59 year olds. Both 15–19 and 60–64 year olds showed the largest gains in employment of 11%.

Part-time workers represented an estimated 22% of all employed people in February 1995, but this proportion varied between the age groups. The highest levels were among those aged 15–19 years with 57% and those aged 65 years and over with 42%.

Estimated unemployment rates have decreased for all age groups except 55–59 year olds in the 12 months to February 1995. The rate was highest for 15–19 year olds at 22.5%, declined through the older age groups to reach a minimum of 5.8% for people aged 45–54, then increased for 55–59 year olds. An estimated 37% of 15–19 year olds were looking for part-time work.

Industry and occupation

The industries with the largest number of employees in NSW in February 1995 were *Retail trade* with 392,900 (or 15% of the total), *Manufacturing* with 374,400 (14%) and *Property and business services* (265,000 or 10%).

Manufacturing employed the largest number of people in Sydney MSR with 15% of the total while *Retail trade* had the largest number in Balance of NSW MSR with 16%.

The largest occupation group in NSW was *Clerks* with 462,600 employees (17% of the total). This was also the largest occupation group in Sydney MSR with 327,700 employees (19%) while *Labourers and related workers* with 177,400 (19%) was the largest group in Balance of NSW MSR.

Between February 1994 and February 1995 six of the eight occupation groups showed increases in employment. The largest increases were in *Salespersons and personal service workers* (16%) and *Labourers and related workers* (11%). The largest decrease was in *Managers and administrators* which fell by 9%.

SUMMARY OF FINDINGS

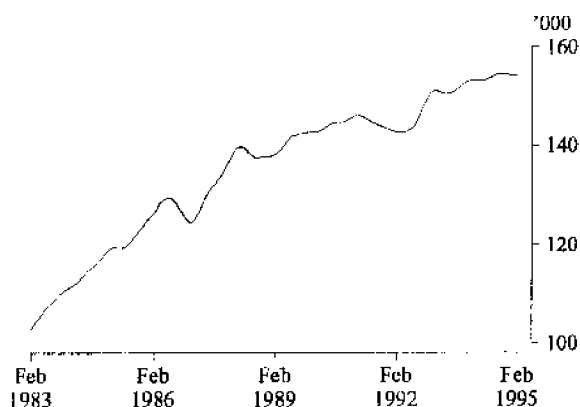
Australian Capital Territory

Note: Seasonally adjusted estimates are not available for the ACT.

Trend series

The trend estimate of the number of **employed** people in the ACT in February 1995 was 154,100, compared to 153,100 in February 1994. The employment estimate has shown only slight monthly movements over the last 12 months.

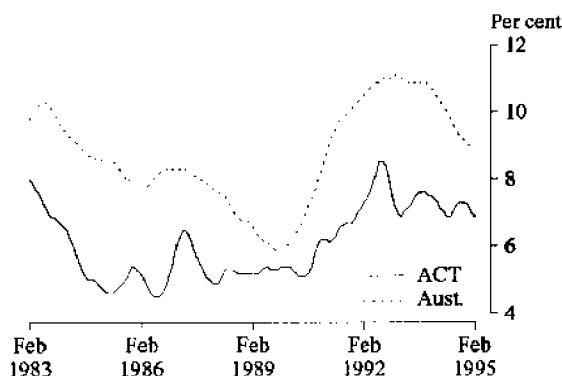
EMPLOYED PERSONS, ACT
(Trend)



The trend **unemployment** rate was 6.9% in February 1995 compared to 7.3% in February 1994. The rate for males (7.5%) was the same as in February 1994 while the female rate has shown a downward trend, falling to 6.2% in February 1995. This was the lowest level since July 1991.

In February 1995 the trend estimate of the number of **unemployed** people in the ACT was 11,400.

UNEMPLOYMENT RATE
(Trend)



The **participation** rate in February 1995 was 72.2%. The participation rate for males continued to gradually decline and was 79.4% in February 1995 compared to 80.5% in February 1994. The female rate in February 1995 (65.3%) was the same as in the previous February, after reaching 66.2% in September 1994.

The ACT **labour force** was estimated at 165,500 in February 1995.

Age

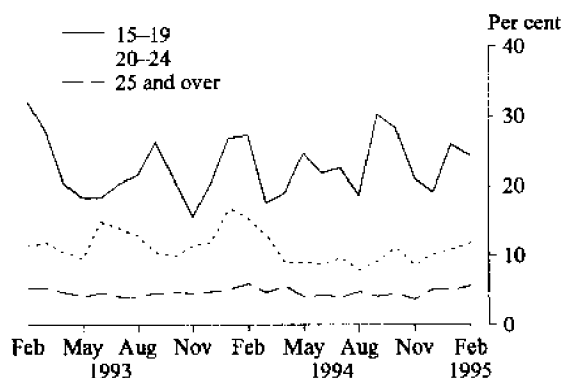
In February 1995 the unemployment rate in the ACT decreased with age, with the highest rate (24.4%) among people aged 15–19 years. The rate was 11.9% for people aged 20–24 years and 5.7% for those aged 25 years and over.

Part-time work is more prevalent in the 15–19 years age group with 69% of those employed working part-time, and over half (53%) of the unemployed looking for part-time work. The average hours worked per week by those aged 15–19 years was 20.5.

The proportion of employed people who worked full-time increased in the older age groups (78% of 20–24 year olds and 81% of people aged 25 years and over). On average those aged 20–24 years worked 33.2 hours per week and those 25 years and over worked 36.1 hours per week.

The highest participation rate was 87.9% for those aged 20–24 years and the lowest was 65.0% for those aged 15–19 years.

UNEMPLOYMENT RATE BY AGE, ACT

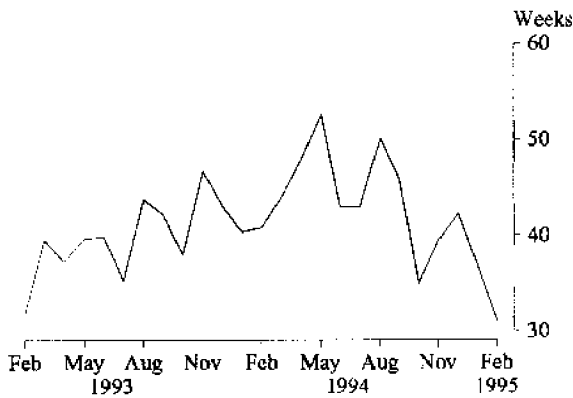


Duration of unemployment

In February 1995 average duration of unemployment in the ACT was 31.0 weeks. For people aged 25 years and over, the average was 38.7 weeks.

The **long term unemployed** (52 weeks and over) represented 17% of all unemployed people in February 1995. This was a decrease from February 1994, when the proportion was 25%.

AVERAGE DURATION OF UNEMPLOYMENT, ACT



Industry and occupation

In February 1995, nearly half of all employed people in the ACT were employed in three industry divisions. These industries were *Government administration and defence* with 36,600 employees or nearly a quarter (24%) of the total, *Retail trade* with 20,400 employees (13% of the total) and *Property and business services* (18,200 or 12%).

Of all employed females, 24% worked in *Government administration and defence*, 15% in *Health and community services* and 14% in *Retail trade*.

The largest occupation group was *Clerks* with a quarter of employed people and 39% of employed women. *Professionals* was the next largest group with 18% of employed people, and 21% of employed males.

NOTE

This publication contains estimates of the civilian labour force in NSW and the ACT derived from the Labour Force Survey component of the Monthly Population Survey, which is conducted on a sample basis throughout Australia.

Explanatory notes for the data contained within this publication can be found on page 40.

Care should be taken in the interpretation of month-to-month movements in estimates. Survey estimates are subject to sampling and non-sampling variability as explained in the Technical Note on Data Reliability on page 43.

This issue contains revised seasonally adjusted and trend estimates as a result of the annual re-analysis of seasonal factors.

GREG BRAY

Deputy Commonwealth Statistician

TABLE 1. LABOUR FORCE STATUS: ORIGINAL SERIES, NSW

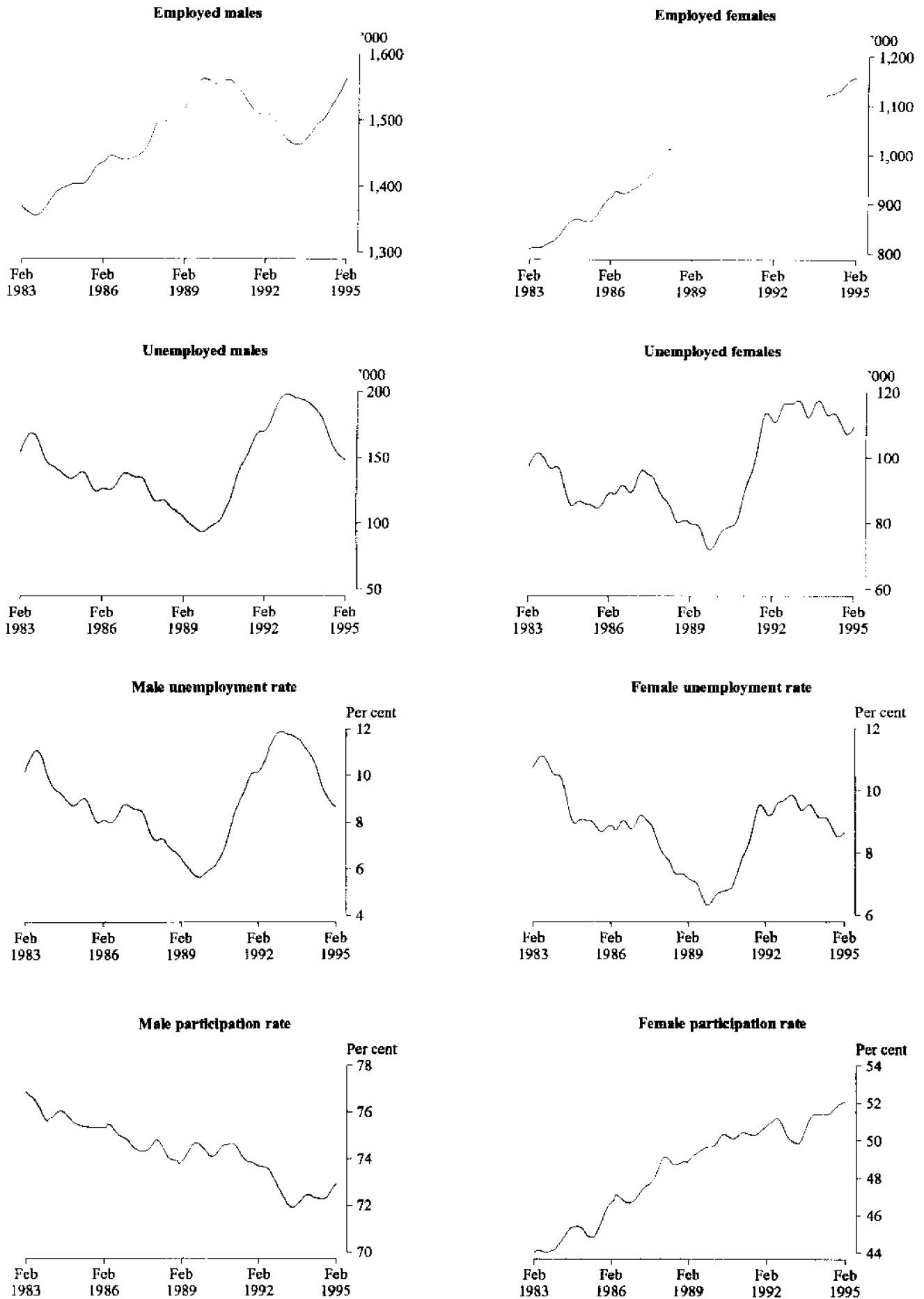
Month	Employed		Unemployed			Labour force ('000)	Not in labour force ('000)	Civilian population aged 15 and over ('000)	Unemployment rate (per cent)	Participation rate (per cent)	
	Full-time workers ('000)	Part-time workers ('000)	Total ('000)	Looking for full-time work ('000)	Looking for part-time work ('000)						Total ('000)
MALES											
February—											
1991	1,421.9	116.5	1,538.4	131.5	13.2	144.7	1,683.1	570.7	2,253.8	8.6	74.7
1992	1,367.4	137.1	1,504.5	171.7	15.3	187.0	1,691.5	588.3	2,279.8	11.1	74.2
1993	1,328.7	121.7	1,450.5	206.7	16.2	222.9	1,673.4	627.0	2,300.4	13.3	72.7
1993—											
December	1,356.8	146.5	1,503.4	183.5	16.7	200.2	1,703.6	614.1	2,317.6	11.8	73.5
1994—											
January	1,338.3	137.5	1,475.7	179.3	19.9	199.2	1,675.0	644.4	2,319.4	11.9	72.2
February	1,344.2	148.4	1,492.6	179.8	16.9	196.7	1,689.4	631.8	2,321.1	11.6	72.8
November	1,369.3	164.9	1,534.2	129.0	14.6	143.6	1,677.8	661.3	2,339.1	8.6	71.7
December	1,395.8	162.9	1,558.7	140.0	17.8	157.8	1,716.5	624.5	2,341.0	9.2	73.3
1995—											
January	1,384.8	159.2	1,544.0	147.4	18.8	166.2	1,710.2	633.6	2,343.8	9.7	73.0
February	1,408.7	155.7	1,564.4	137.8	19.8	157.6	1,722.0	624.5	2,346.5	9.2	73.4
MARRIED FEMALES											
February—											
1991	366.2	285.4	651.6	23.2	15.5	38.7	690.2	669.7	1,359.9	5.6	50.8
1992	366.5	280.3	646.8	35.0	16.3	51.3	698.1	667.7	1,365.8	7.4	51.1
1993	366.9	273.1	640.0	38.2	17.8	56.0	696.0	652.0	1,348.0	8.0	51.6
1993—											
December	384.4	293.0	677.4	28.2	12.1	40.3	717.7	642.3	1,360.0	5.6	52.8
1994—											
January	376.9	266.5	643.3	32.8	9.4	42.2	685.5	684.5	1,370.0	6.2	50.0
February	391.7	283.9	675.7	38.8	16.1	55.0	730.6	650.4	1,381.0	7.5	52.9
November	384.7	301.9	686.5	25.5	17.9	43.4	729.9	654.2	1,384.1	5.9	52.7
December	387.6	296.8	684.4	22.1	16.7	38.7	723.2	655.0	1,378.2	5.4	52.5
1995—											
January	379.7	283.3	663.0	24.3	13.1	37.5	700.5	692.2	1,392.7	5.3	50.3
February	383.3	298.3	681.7	30.3	20.2	50.5	732.1	662.6	1,394.7	6.9	52.5
ALL FEMALES											
February—											
1991	670.4	400.1	1,070.5	65.5	34.1	99.6	1,170.1	1,159.3	2,329.4	8.5	50.2
1992	676.7	396.8	1,073.5	91.0	34.9	125.8	1,199.3	1,159.8	2,359.0	10.5	50.8
1993	670.7	398.5	1,069.2	100.5	35.0	135.5	1,204.7	1,176.7	2,381.4	11.2	50.6
1993—											
December	689.1	436.3	1,125.4	77.1	33.0	110.1	1,235.5	1,165.2	2,400.7	8.9	51.5
1994—											
January	678.0	410.2	1,088.3	93.2	27.8	120.9	1,209.2	1,193.4	2,402.6	10.0	50.3
February	687.5	420.4	1,107.9	95.3	34.4	129.8	1,237.7	1,166.8	2,404.5	10.5	51.5
November	695.0	455.7	1,150.7	66.7	31.8	98.5	1,249.2	1,175.1	2,424.3	7.9	51.5
December	712.6	455.2	1,167.7	73.6	37.5	111.1	1,278.8	1,147.5	2,426.3	8.7	52.7
1995—											
January	692.7	433.5	1,126.2	74.8	33.3	108.1	1,234.3	1,194.3	2,428.6	8.8	50.8
February	690.3	445.1	1,135.4	89.3	42.7	132.0	1,267.4	1,163.4	2,430.9	10.4	52.1
PERSONS											
February—											
1991	2,092.3	516.7	2,608.9	197.0	47.3	244.3	2,853.2	1,730.0	4,583.2	8.6	62.3
1992	2,044.1	533.8	2,578.0	262.7	50.1	312.8	2,890.8	1,748.1	4,638.9	10.8	62.3
1993	1,999.5	520.3	2,519.7	307.2	51.3	358.4	2,878.2	1,803.7	4,681.9	12.5	61.5
1993—											
December	2,046.0	582.8	2,628.8	260.6	49.6	310.3	2,939.0	1,779.3	4,718.3	10.6	62.3
1994—											
January	2,016.3	547.7	2,564.0	272.4	47.7	320.1	2,884.1	1,837.8	4,722.0	11.1	61.1
February	2,031.7	568.8	2,600.5	275.1	51.4	326.5	2,927.0	1,798.6	4,725.6	11.2	61.9
November	2,064.2	620.6	2,684.9	195.7	46.4	242.0	2,926.9	1,836.4	4,763.4	8.3	61.4
December	2,108.4	618.1	2,726.4	213.6	55.3	268.9	2,995.3	1,772.1	4,767.4	9.0	62.8
1995—											
January	2,077.5	592.8	2,670.2	222.2	52.0	274.2	2,944.4	1,827.9	4,772.4	9.3	61.7
February	2,099.1	600.7	2,699.8	227.2	62.5	289.7	2,989.4	1,787.9	4,777.4	9.7	62.6

TABLE 2. LABOUR FORCE STATUS: SEASONALLY ADJUSTED AND TREND SERIES, NSW

Month	Seasonally adjusted series					Trend series (a)				
	Employed (^{'000})	Unemp- loyed (^{'000})	Labour force (^{'000})	Unemp- loyment rate (per cent)	Partici- pation rate (per cent)	Employed (^{'000})	Unemp- loyed (^{'000})	Labour force (^{'000})	Unemp- loyment rate (per cent)	Partici- pation rate (per cent)
MALES										
February—										
1991	1,544.9	132.0	1,676.8	7.9	74.4	1,547.4	135.4	1,682.8	8.0	74.7
1992	1,511.8	170.8	1,682.6	10.1	73.8	1,509.4	170.2	1,679.6	10.1	73.7
1993	1,457.7	204.1	1,661.8	12.3	72.2	1,465.3	197.3	1,662.6	11.9	72.3
1993—										
December	1,492.2	191.4	1,683.6	11.4	72.6	1,490.7	188.2	1,678.9	11.2	72.4
1994—										
January	1,490.9	185.4	1,676.4	11.1	72.3	1,494.5	186.5	1,681.0	11.1	72.5
February	1,500.0	180.2	1,680.2	10.7	72.4	1,496.9	184.6	1,681.5	11.0	72.4
March	1,499.9	184.9	1,684.8	11.0	72.5	1,499.3	182.1	1,681.4	10.8	72.4
April	1,502.6	178.9	1,681.5	10.6	72.3	1,502.6	179.0	1,681.6	10.6	72.3
May	1,501.9	177.5	1,679.4	10.6	72.2	1,507.3	175.1	1,682.5	10.4	72.3
June	1,512.5	172.9	1,685.4	10.3	72.4	1,513.1	170.6	1,683.7	10.1	72.3
July	1,520.9	162.1	1,683.0	9.6	72.2	1,519.3	165.6	1,684.9	9.8	72.3
August	1,527.9	157.2	1,685.1	9.3	72.2	1,525.2	161.0	1,686.1	9.5	72.3
September	1,534.1	163.0	1,697.1	9.6	72.7	1,530.9	157.4	1,688.3	9.3	72.3
October	1,536.4	150.4	1,686.8	8.9	72.2	1,536.8	154.9	1,691.6	9.2	72.4
November	1,536.3	153.1	1,689.4	9.1	72.2	1,543.0	153.0	1,696.0	9.0	72.5
December	1,547.3	150.5	1,697.8	8.9	72.5	1,549.9	151.3	1,701.2	8.9	72.7
1995—										
January	1,559.6	154.7	1,714.3	9.0	73.1	1,556.9	149.8	1,706.6	8.8	72.8
February	1,572.1	144.4	1,716.5	8.4	73.2	1,563.2	148.4	1,711.6	8.7	72.9
FEMALES										
February—										
1991	1,081.6	89.4	1,170.9	7.6	50.3	1,084.5	89.4	1,174.0	7.6	50.4
1992	1,084.7	111.8	1,196.5	9.3	50.7	1,086.0	111.5	1,197.5	9.3	50.8
1993	1,080.7	119.6	1,200.3	10.0	50.4	1,071.9	117.5	1,189.4	9.9	49.9
1993—										
December	1,113.8	107.5	1,221.3	8.8	50.9	1,117.8	116.3	1,234.1	9.4	51.4
1994—										
January	1,121.4	115.0	1,236.4	9.3	51.5	1,120.5	114.7	1,235.2	9.3	51.4
February	1,119.9	114.4	1,234.3	9.3	51.3	1,122.6	113.3	1,235.9	9.2	51.4
March	1,127.1	111.9	1,239.0	9.0	51.5	1,123.7	112.9	1,236.6	9.1	51.4
April	1,123.2	115.1	1,238.3	9.3	51.4	1,124.4	113.1	1,237.6	9.1	51.4
May	1,129.5	108.5	1,238.0	8.8	51.3	1,125.6	113.5	1,239.0	9.2	51.4
June	1,124.0	116.9	1,240.9	9.4	51.4	1,127.4	113.2	1,240.6	9.1	51.4
July	1,131.0	116.2	1,247.2	9.3	51.6	1,130.4	112.3	1,242.7	9.0	51.4
August	1,120.8	107.4	1,228.2	8.7	50.8	1,135.0	110.8	1,245.9	8.9	51.5
September	1,156.6	110.0	1,266.7	8.7	52.3	1,140.5	109.2	1,249.7	8.7	51.6
October	1,143.3	106.7	1,250.0	8.5	51.6	1,145.9	107.8	1,253.7	8.6	51.8
November	1,147.5	106.4	1,253.9	8.5	51.7	1,150.2	107.2	1,257.4	8.5	51.9
December	1,156.4	108.5	1,264.9	8.6	52.1	1,153.1	107.5	1,260.5	8.5	52.0
1995—										
January	1,159.9	102.7	1,262.6	8.1	52.0	1,154.9	108.2	1,263.1	8.6	52.0
February	1,147.7	116.3	1,264.0	9.2	52.0	1,156.0	109.5	1,265.5	8.7	52.1
PERSONS										
February—										
1991	2,626.4	221.3	2,847.8	7.8	62.1	2,631.9	224.8	2,856.8	7.9	62.3
1992	2,596.5	282.5	2,879.0	9.8	62.1	2,595.4	281.7	2,877.1	9.8	62.0
1993	2,538.4	323.8	2,862.1	11.3	61.1	2,537.2	314.8	2,852.0	11.0	60.9
1993—										
December	2,606.0	298.9	2,904.9	10.3	61.6	2,608.5	304.5	2,913.0	10.5	61.7
1994—										
January	2,612.3	300.4	2,912.7	10.3	61.7	2,615.0	301.2	2,916.2	10.3	61.8
February	2,619.9	294.6	2,914.5	10.1	61.7	2,619.5	297.9	2,917.4	10.2	61.7
March	2,627.0	296.8	2,923.8	10.2	61.8	2,623.0	295.0	2,918.0	10.1	61.7
April	2,625.8	294.0	2,919.8	10.1	61.7	2,627.1	292.1	2,919.2	10.0	61.7
May	2,631.4	286.0	2,917.4	9.8	61.6	2,632.9	288.6	2,921.5	9.9	61.7
June	2,636.5	289.9	2,926.4	9.9	61.7	2,640.5	283.8	2,924.3	9.7	61.7
July	2,652.0	278.3	2,930.3	9.5	61.7	2,649.7	277.9	2,927.6	9.5	61.7
August	2,648.7	264.6	2,913.3	9.1	61.3	2,660.2	271.8	2,932.0	9.3	61.7
September	2,690.7	273.1	2,963.8	9.2	62.3	2,671.5	266.5	2,938.0	9.1	61.8
October	2,679.8	257.1	2,936.8	8.8	61.7	2,682.6	262.7	2,945.4	8.9	61.9
November	2,683.8	259.5	2,943.3	8.8	61.8	2,693.2	260.2	2,953.4	8.8	62.0
December	2,703.7	259.0	2,962.7	8.7	62.1	2,702.9	258.7	2,961.7	8.7	62.1
1995—										
January	2,719.4	257.5	2,976.9	8.6	62.4	2,711.7	258.0	2,969.7	8.7	62.2
February	2,719.8	260.7	2,980.6	8.7	62.4	2,719.2	257.9	2,977.1	8.7	62.3

(a) See Explanatory Note 28.

TREND SERIES, NSW (a)



(a) Comparisons between these graphs should not be made, as their vertical axes are not similarly scaled.

TABLE 3. LABOUR FORCE STATUS: AGE, NSW, FEBRUARY 1995

Age group (years)	Employed		Unemployed				Labour force ('000)	Not in labour force ('000)	Civilian population aged 15 and over ('000)	Unemp- loyment rate (per cent)	Partici- pation rate (per cent)
	Full-time workers ('000)	Part-time workers ('000)	Total ('000)	Looking for full- time work ('000)	Looking for part- time work ('000)	Total ('000)					
MALES											
15-19	54.1	50.1	104.2	18.1	9.9	28.0	132.2	81.9	214.1	21.2	61.8
20-24	166.0	17.8	183.7	23.9	* 3.5	27.4	211.1	28.5	239.6	13.0	88.1
25-34	364.0	22.6	386.6	36.2	* 2.3	38.6	425.2	45.0	470.2	9.1	90.4
35-44	366.1	21.3	387.4	30.2	* 1.2	31.4	418.8	35.4	454.1	7.5	92.2
45-54	308.8	14.1	322.9	16.4	* 1.2	17.7	340.6	39.3	379.9	5.2	89.6
55-59	83.8	10.8	94.6	9.3	* 1.0	10.2	104.9	35.1	139.9	9.8	74.9
60-64	46.1	8.2	54.2	* 3.8	* 0.6	* 4.4	58.6	63.0	121.6	* 7.5	48.2
65 and over	19.9	10.7	30.6	* 0.0	* 0.0	* 0.0	30.6	296.4	327.0	* 0.0	9.4
Total	1,408.7	155.7	1,564.4	137.8	19.8	157.6	1,722.0	624.5	2,346.5	9.2	73.4
MARRIED FEMALES											
15-19	* 1.5	* 1.0	* 2.5	* 0.3	* 0.4	* 0.7	* 3.2	* 1.5	* 4.7	* 22.9	* 67.9
20-24	25.1	11.8	36.9	* 3.8	* 2.3	6.0	42.9	21.0	64.0	14.1	67.1
25-34	109.0	79.2	188.2	12.2	7.2	19.4	207.5	112.1	319.6	9.3	64.9
35-44	119.8	104.5	224.3	9.8	* 4.9	14.8	239.0	112.8	351.8	6.2	67.9
45-54	101.1	73.7	174.8	* 4.2	* 3.1	7.3	182.0	104.7	286.7	4.0	63.5
55-59	17.0	16.1	33.1	* 0.0	* 1.6	* 1.6	34.7	63.1	97.8	* 4.6	35.5
60-64	7.3	8.2	15.5	* 0.0	* 0.7	* 0.7	16.2	69.0	85.2	* 4.1	19.0
65 and over	* 2.6	* 4.0	6.5	* 0.0	* 0.0	* 0.0	6.5	178.4	184.9	* 0.0	3.5
Total	383.3	298.3	681.7	30.3	20.2	50.5	732.1	662.6	1,394.7	6.9	52.5
ALL FEMALES											
15-19	30.9	62.5	93.4	17.8	11.4	29.2	122.6	81.8	204.4	23.8	60.0
20-24	120.8	44.8	165.6	19.0	5.7	24.7	190.2	44.6	234.8	13.0	81.0
25-34	199.7	98.4	298.1	24.3	9.5	33.9	332.0	143.8	475.7	10.2	69.8
35-44	169.0	118.8	287.8	15.8	6.2	22.0	309.7	147.0	456.8	7.1	67.8
45-54	131.1	85.2	216.3	10.2	5.5	15.7	232.0	134.5	366.5	6.8	63.3
55-59	24.7	19.0	43.7	* 1.9	* 2.6	* 4.5	48.2	88.5	136.7	* 9.3	35.3
60-64	10.2	10.1	20.3	* 0.3	* 0.7	* 1.0	21.3	102.4	123.7	* 4.6	17.2
65 and over	* 4.0	6.3	10.3	* 0.0	* 1.1	* 1.1	11.4	420.9	432.3	* 9.7	2.6
Total	690.3	445.1	1,135.4	89.3	42.7	132.0	1,267.4	1,163.4	2,430.9	10.4	52.1
PERSONS											
15-19	85.0	112.6	197.6	35.8	21.4	57.2	254.8	163.7	418.5	22.5	60.9
20-24	286.7	62.5	349.3	42.8	9.3	52.1	401.3	73.1	474.4	13.0	84.6
25-34	563.7	121.1	684.8	60.6	11.9	72.4	757.2	188.7	945.9	9.6	80.0
35-44	535.1	140.1	675.1	45.9	7.4	53.4	728.5	182.4	910.9	7.3	80.0
45-54	439.9	99.3	539.2	26.7	6.7	33.4	572.6	173.8	746.4	5.8	76.7
55-59	108.5	29.8	138.3	11.2	* 3.5	14.7	153.1	123.5	276.6	9.6	55.3
60-64	56.3	18.3	74.6	* 4.1	* 1.2	5.4	79.9	165.4	245.3	6.7	32.6
65 and over	23.9	17.0	40.9	* 0.0	* 1.1	* 1.1	42.0	717.3	759.3	* 2.6	5.5
Total	2,099.1	600.7	2,699.8	227.2	62.5	289.7	2,989.4	1,787.9	4,777.4	9.7	62.6

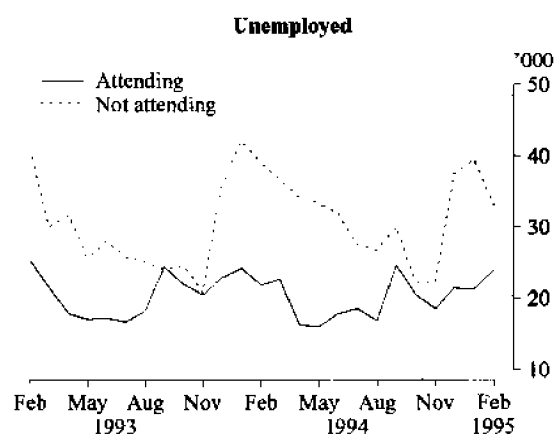
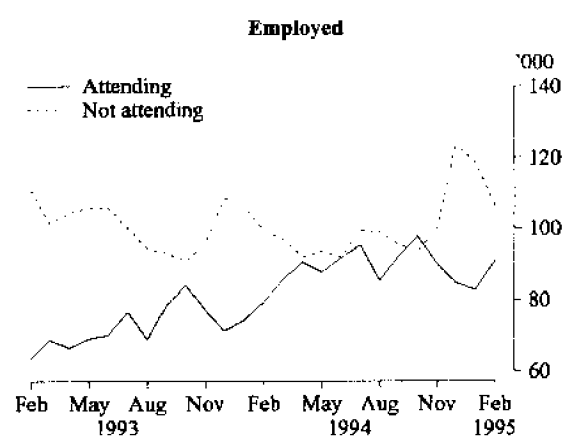
PERSONS AGED 15-19 IN THE LABOUR FORCE, NSW:
FULL-TIME ATTENDANCE AT SCHOOL OR A TERTIARY EDUCATIONAL INSTITUTION

TABLE 4. LABOUR FORCE STATUS: PERSONS AGED 15-24 BY FULL-TIME EDUCATIONAL ATTENDANCE, NSW, FEBRUARY 1995

Age (years)	Employed			Unemployed			Labour force ('000)	Not in labour force ('000)	Civilian population aged 15 and over ('000)	Unemployment rate (per cent)	Participation rate (per cent)
	Full-time workers ('000)	Part-time workers ('000)	Total ('000)	Looking for full-time work ('000)	Looking for part-time work ('000)	Total ('000)					
ATTENDING SCHOOL OR A TERTIARY EDUCATIONAL INSTITUTION FULL-TIME											
15-19	7.6	83.4	91.0	* 5.0	19.0	24.0	115.0	144.3	259.3	20.9	44.4
15	* 0.5	17.2	17.7	* 0.5	7.9	8.4	26.1	52.4	78.5	32.3	33.2
16	* 0.0	26.4	26.4	* 0.9	* 3.8	* 4.7	31.1	40.1	71.2	* 15.2	43.7
17	* 1.3	19.7	20.9	* 1.0	* 2.2	* 3.1	24.0	28.8	52.8	* 13.0	45.5
18	* 1.6	9.4	11.1	* 1.3	* 4.0	* 5.3	16.4	14.8	31.1	* 32.3	52.6
19	* 4.1	10.8	15.0	* 1.2	* 1.2	* 2.4	17.4	8.2	25.6	* 14.1	68.0
20-24	9.7	19.1	28.8	* 1.8	* 2.7	* 4.5	33.2	23.8	57.1	* 13.4	58.2
20	* 2.6	8.2	10.8	* 0.7	* 0.3	* 1.0	11.8	7.1	18.9	* 8.4	62.5
21	* 4.2	5.3	9.5	* 0.0	* 0.4	* 0.4	9.8	5.7	15.6	* 3.9	63.2
22	* 0.6	* 3.3	* 3.8	* 0.3	* 1.6	* 1.9	5.7	* 5.1	10.8	* 32.7	52.7
23	* 1.2	* 0.7	* 1.9	* 0.4	* 0.4	* 0.8	* 2.7	* 2.3	* 5.0	* 30.5	* 54.2
24	* 1.2	* 1.6	* 2.8	* 0.4	* 0.0	* 0.4	* 3.2	* 3.6	6.9	* 13.0	* 47.0
Total aged 15-24	17.2	102.5	119.8	6.7	21.7	28.5	148.3	168.1	316.4	19.2	46.9
NOT ATTENDING SCHOOL OR A TERTIARY EDUCATIONAL INSTITUTION FULL-TIME (a)											
15-19	77.4	29.2	106.6	30.9	* 2.3	33.2	139.8	19.4	159.2	23.8	87.8
15	* 2.1	* 0.5	* 2.6	* 0.9	* 0.3	* 1.1	* 3.8	* 0.6	* 4.4	* 30.2	* 85.6
16	7.4	* 1.8	9.2	* 0.9	* 0.3	* 1.2	10.5	* 1.4	11.8	* 11.8	88.4
17	13.3	6.0	19.3	6.9	* 0.3	7.3	26.6	* 3.7	30.3	27.4	87.7
18	18.7	12.6	31.3	12.4	* 0.6	13.0	44.3	8.4	52.7	29.3	84.2
19	35.9	8.2	44.1	9.8	* 0.8	10.6	54.6	5.3	60.0	19.3	91.1
20-24	277.1	43.4	320.5	41.0	6.6	47.6	368.1	49.2	417.3	12.9	88.2
20	46.0	9.1	55.2	6.5	* 1.7	8.1	63.3	6.9	70.2	12.9	90.2
21	44.1	11.7	55.8	9.0	* 1.9	10.9	66.7	9.6	76.3	16.4	87.4
22	56.6	6.5	63.1	10.2	* 1.4	11.6	74.7	10.1	84.8	15.5	88.1
23	65.7	7.8	73.5	7.8	* 1.2	8.9	82.4	12.1	94.5	10.9	87.2
24	64.7	8.2	72.9	7.6	* 0.4	8.0	80.9	10.5	91.4	9.9	88.5
Total aged 15-24	354.5	72.6	427.1	71.9	8.9	80.8	507.9	68.7	576.6	15.9	88.1
TOTAL											
15-19	85.0	112.6	197.6	35.8	21.4	57.2	254.8	163.7	418.5	22.5	60.9
15	* 2.6	17.7	20.3	* 1.4	8.2	9.6	29.9	53.0	82.9	32.0	36.0
16	7.4	28.2	35.6	* 1.9	* 4.1	6.0	41.6	41.5	83.1	14.4	50.0
17	14.5	25.7	40.2	7.9	* 2.5	10.4	50.6	32.5	83.2	20.5	60.9
18	20.4	22.0	42.4	13.7	* 4.6	18.3	60.7	23.1	83.8	30.1	72.4
19	40.0	19.0	59.0	11.0	* 2.0	13.0	72.0	13.5	85.6	18.0	84.2
20-24	286.7	62.5	349.3	42.8	9.3	52.1	401.3	73.1	474.4	13.0	84.6
20	48.6	17.3	66.0	7.1	* 2.0	9.1	75.1	14.0	89.1	12.2	84.3
21	48.2	17.1	65.3	9.0	* 2.3	11.3	76.6	15.3	91.9	14.8	83.3
22	57.2	9.8	66.9	10.5	* 3.0	13.4	80.4	15.2	95.6	16.7	84.1
23	66.8	8.5	75.3	8.2	* 1.6	9.8	85.1	14.4	99.5	11.5	85.5
24	65.9	9.8	75.7	8.0	* 0.4	8.4	84.1	14.2	98.3	10.0	85.6
Total aged 15-24	371.7	175.1	546.8	78.7	30.6	109.3	656.1	236.8	893.0	16.7	73.5

(a) Includes institutionalised persons.

TABLE 5. LABOUR FORCE STATUS: FAMILY STATUS, NSW, FEBRUARY 1995

Family status	Employed			Unemployed			Labour force	Not in labour force	Civilian population aged 15 and over	Unemployment rate (per cent)	Participation rate (per cent)
	Full-time workers ('000)	Part-time workers ('000)	Total ('000)	Looking for full-time work ('000)	Looking for part-time work ('000)	Total ('000)					
<i>Member of a family</i>	1,705.3	537.0	2,242.3	174.3	53.0	227.3	2,469.6	1,330.9	3,800.5	9.2	65.0
Husband	921.9	57.3	979.2	59.2	* 4.1	63.3	1,042.5	324.2	1,366.7	6.1	76.3
With children aged 0-14 present	507.2	22.7	529.8	40.2	* 2.2	42.4	572.2	34.4	606.6	7.4	94.3
Without children aged 0-14 present	414.8	34.6	449.4	19.0	* 1.9	20.9	470.3	289.7	760.0	4.4	61.9
With dependants present	579.9	25.4	605.3	42.3	* 2.2	44.5	649.8	41.5	691.3	6.8	94.0
Without dependants present	342.1	31.9	373.9	16.9	* 1.9	18.8	392.7	282.6	675.3	4.8	58.2
Wife	370.1	292.4	662.5	27.3	19.3	46.6	709.1	638.5	1,347.6	6.6	52.6
With children aged 0-14 present	150.9	175.8	326.7	18.0	13.3	31.3	357.9	227.4	585.3	8.7	61.2
Without children aged 0-14 present	219.2	116.7	335.9	9.4	6.0	15.3	351.2	411.1	762.3	4.4	46.1
With dependants present	181.1	198.6	379.7	19.2	14.2	33.4	413.1	255.8	668.9	8.1	61.8
Without dependants present	189.0	93.8	282.8	8.2	* 5.0	13.2	296.0	382.7	678.7	4.5	43.6
Not-married male family head	18.3	* 2.5	20.8	* 3.2	* 0.3	* 3.5	24.3	18.6	43.0	* 14.6	56.7
With children aged 0-14 present	5.4	* 1.3	6.7	* 1.0	* 0.3	* 1.3	8.0	* 4.4	12.4	* 16.1	64.3
Without children aged 0-14 present	12.9	* 1.2	14.1	* 2.3	* 0.0	* 2.3	16.3	14.2	30.5	* 13.8	53.6
With dependants present	8.5	* 1.3	9.8	* 1.6	* 0.3	* 1.9	11.7	5.4	17.0	* 16.5	68.5
Without dependants present	9.8	* 1.2	11.0	* 1.6	* 0.0	* 1.6	12.7	13.2	25.9	* 12.8	48.9
Not-married female family head	40.0	30.2	70.2	11.3	5.8	17.1	87.3	110.1	197.4	19.6	44.2
With children aged 0-14 present	21.2	20.5	41.7	8.2	* 5.1	13.4	55.1	56.2	111.3	24.3	49.5
Without children aged 0-14 present	18.8	9.7	28.5	* 3.1	* 0.6	* 3.7	32.2	53.9	86.1	* 11.4	37.4
With dependants present	27.2	24.3	51.5	8.8	* 5.1	14.0	65.5	63.6	129.1	21.3	50.7
Without dependants present	12.8	5.9	18.7	* 2.5	* 0.6	* 3.1	21.9	46.5	68.4	* 14.2	32.0
Full-time student aged 15-24 (a)	14.8	95.9	110.7	* 5.1	18.6	23.7	134.4	145.9	280.3	17.6	47.9
Other child of family head	313.4	55.0	368.4	62.3	* 4.6	66.9	435.3	49.0	484.3	15.4	89.9
Other relative of family head	26.8	* 3.6	30.4	5.8	* 0.4	6.2	36.6	44.7	81.3	16.9	45.0
<i>Not a member of a family</i>	326.3	49.2	375.6	39.7	6.3	46.0	421.6	318.1	739.6	10.9	57.0
Living alone	157.0	25.8	182.8	21.1	* 4.2	25.3	208.1	274.2	482.3	12.2	43.1
Not living alone	169.3	23.5	192.8	18.6	* 2.2	20.7	213.5	43.8	257.4	9.7	83.0
<i>Not family coded</i>	67.4	14.5	81.9	13.2	* 3.2	16.4	98.3	138.9	237.2	16.7	41.4
Total	2,099.1	600.7	2,699.8	227.2	62.5	289.7	2,989.4	1,787.9	4,777.4	9.7	62.6

(a) Excludes persons aged 20-24 attending school.

TABLE 6. EMPLOYED PERSONS: STATUS IN EMPLOYMENT (a), NSW ('000)

Status in employment	Males			Females			Persons		
	February 1994	November 1994	February 1995	February 1994	November 1994	February 1995	February 1994	November 1994	February 1995
Employees	1,229.4	1,288.5	1,328.1	988.6	1,023.5	999.4	2,217.9	2,312.0	2,327.6
Employers	83.2	65.5	69.6	37.7	35.3	37.3	120.9	100.8	106.9
Own account workers	170.2	169.7	156.5	65.5	78.5	82.9	235.7	248.2	239.3
Total employed (b)	1,492.6	1,534.2	1,564.4	1,107.9	1,150.7	1,135.4	2,600.5	2,684.9	2,699.8

(a) Status in Employment replaces the previous term Status of Worker. No definitional changes have been made—the only changes are to the classification titles. (b) Includes contributing family workers.

TABLE 7. EMPLOYED PERSONS: AGE, NSW
(^{'000})

Month	Age group (years)								Total employed
	15-19	20-24	25-34	35-44	45-54	55-59	60-64	65 and over	
MALES									
1994--									
February	93.6	174.2	378.1	377.7	298.8	94.6	49.0	26.7	1,492.6
1994--									
November	95.2	184.7	387.1	385.4	312.0	90.7	47.9	31.2	1,534.2
December	104.1	189.3	390.2	386.2	316.8	92.3	48.5	31.3	1,558.7
1995--									
January	100.4	187.3	382.3	381.3	315.9	94.1	52.8	29.8	1,544.0
February	104.2	183.7	386.6	387.4	322.9	94.6	54.2	30.6	1,564.4
MARRIED FEMALES									
1994--									
February	* 1.3	41.0	184.7	222.3	165.5	39.5	13.0	8.4	675.7
1994--									
November	* 3.2	38.5	183.8	229.3	178.1	34.2	13.4	6.2	686.5
December	* 3.6	42.1	182.5	229.7	176.0	31.2	14.0	* 5.3	684.4
1995--									
January	* 4.0	36.7	181.0	213.2	176.9	32.2	13.4	5.5	663.0
February	* 2.5	36.9	188.2	224.3	174.8	33.1	15.5	6.5	681.7
ALL FEMALES									
1994--									
February	84.8	159.3	287.3	280.8	214.2	50.0	18.3	13.2	1,107.9
1994--									
November	94.7	169.2	287.9	295.6	224.1	50.1	18.8	10.4	1,150.7
December	104.0	174.7	296.9	296.9	219.9	45.8	19.4	10.0	1,167.7
1995--									
January	101.0	165.8	292.6	276.0	218.1	45.0	17.2	10.5	1,126.2
February	93.4	165.6	298.1	287.8	216.3	43.7	20.3	10.3	1,135.4
PERSONS									
1994--									
February	178.4	333.4	665.5	658.5	513.0	144.6	67.3	39.8	2,600.5
1994--									
November	189.9	353.9	675.0	681.0	536.1	140.8	66.7	41.6	2,684.9
December	208.2	364.0	687.1	683.1	536.7	138.2	67.9	41.3	2,726.4
1995--									
January	201.4	353.1	675.0	657.3	534.1	139.2	70.0	40.3	2,670.2
February	197.6	349.3	684.8	675.1	539.2	138.3	74.6	40.9	2,699.8

ANNUAL CHANGE IN EMPLOYMENT BY AGE, NSW,
FEBRUARY 1994 TO FEBRUARY 1995

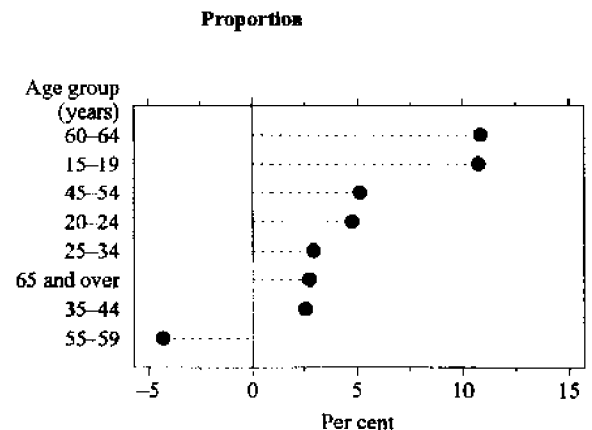
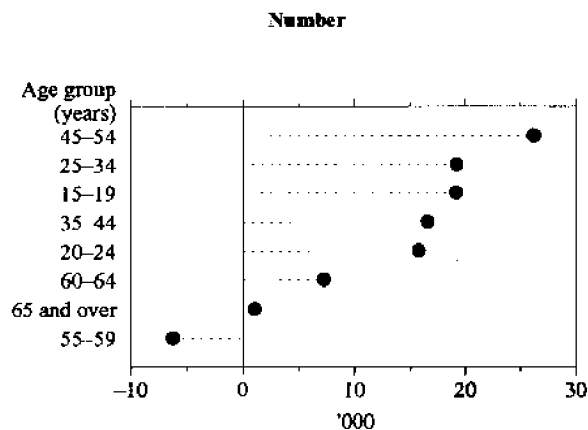


TABLE 8. EMPLOYED PERSONS: INDUSTRY (a), NSW, FEBRUARY 1995
(000)

<i>Industry division and subdivision</i>	<i>Males</i>	<i>Females</i>	<i>Persons</i>
<i>Agriculture, forestry and fishing</i>	80.4	39.3	119.7
Agriculture	68.7	35.7	104.3
Services to agriculture; hunting and trapping	5.7	* 2.4	8.1
Forestry and logging	* 2.0	* 0.6	* 2.6
Commercial fishing	* 4.1	* 0.6	* 4.7
<i>Mining</i>	22.5	* 0.9	23.4
Coal mining	14.2	* 0.3	14.5
Oil and gas extraction	* 1.0	* 0.0	* 1.0
Metal ore mining	* 0.7	* 0.0	* 0.7
Other mining	* 4.3	* 0.6	* 4.9
Services to mining	* 2.2	* 0.0	* 2.2
<i>Manufacturing</i>	269.3	105.1	374.4
Food, beverage and tobacco manufacturing	45.0	20.5	65.5
Textile, clothing, footwear and leather manufacturing	11.9	17.2	29.1
Wood and paper product manufacturing	17.9	* 4.0	21.9
Printing, publishing and recorded media	28.5	13.1	41.6
Petroleum, coal, chemical and associated product manufacturing	26.2	14.4	40.6
Non-metallic mineral product manufacturing	13.1	* 4.3	17.4
Metal product manufacturing	54.7	7.1	61.8
Machinery and equipment manufacturing	53.8	19.4	73.2
Other manufacturing	18.3	* 5.0	23.3
<i>Electricity, gas and water supply</i>	30.0	* 4.6	34.6
Electricity and gas supply	20.9	* 2.5	23.5
Water supply, sewerage and drainage services	9.1	* 2.0	11.1
<i>Construction</i>	162.1	24.1	186.3
General construction	56.1	8.5	64.6
Construction trade services	106.0	15.6	121.7
<i>Wholesale trade</i>	130.4	56.6	187.0
Basic material wholesaling	31.4	10.3	41.8
Machinery and motor vehicle wholesaling	55.3	18.3	73.6
Personal and household good wholesaling	43.7	27.9	71.6
<i>Retail trade</i>	204.9	187.9	392.9
Food retailing	67.2	77.1	144.2
Personal and household good retailing	71.7	96.2	167.9
Motor vehicle retailing and services	66.1	14.6	80.7
<i>Accommodation, cafes and restaurants</i>	66.1	71.3	137.4
<i>Transport and storage</i>	103.3	29.6	132.9
Road transport	51.2	10.2	61.4
Rail transport	20.5	* 1.6	22.1
Water transport	* 2.2	* 0.6	* 2.8
Air and Space transport	12.4	5.7	18.2
Other transport	* 0.3	* 0.3	* 0.6
Services to transport	12.2	10.5	22.6
Storage	* 4.4	* 0.7	* 5.1
<i>Communication services</i>	40.1	15.7	55.8
<i>Finance and insurance</i>	47.1	65.9	113.0
Finance	27.7	45.9	73.6
Insurance	11.3	11.8	23.1
Services to finance and insurance	8.1	8.1	16.2
<i>Property and business services</i>	143.2	121.8	265.0
Property services	19.3	12.5	31.8
Business services	123.9	109.3	233.2
<i>Government administration and defence</i>	63.8	38.7	102.5
Government administration	57.3	37.7	95.0
Defence	6.5	* 1.0	7.5
<i>Education</i>	61.3	106.2	167.5
<i>Health and community services</i>	54.4	183.6	238.0
Health services	43.2	150.1	193.3
Community services	11.2	33.5	44.7
<i>Cultural and recreational services</i>	35.1	34.8	70.0
Motion picture, radio and television services	12.3	9.3	21.6
Libraries, museums and the arts	8.8	9.9	18.7
Sport and recreation	14.0	15.7	29.7
<i>Personal and other services</i>	50.3	49.4	99.7
Personal services	16.7	29.9	46.6
Other services	33.6	17.4	51.0
Private households employing staff	* 0.0	* 2.1	* 2.1
Total employed	1,564.4	1,135.4	2,699.8

(a) Industry data are now classified according to the Australian and New Zealand Standard Industrial Classification. See the Explanatory Notes for more details.

EMPLOYMENT BY INDUSTRY DIVISION, NSW, FEBRUARY 1995

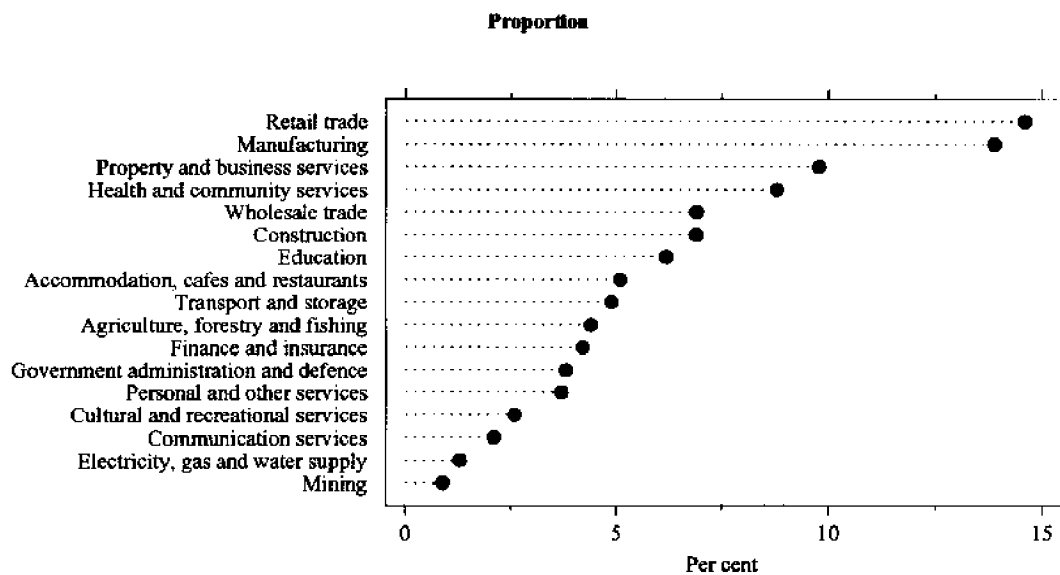
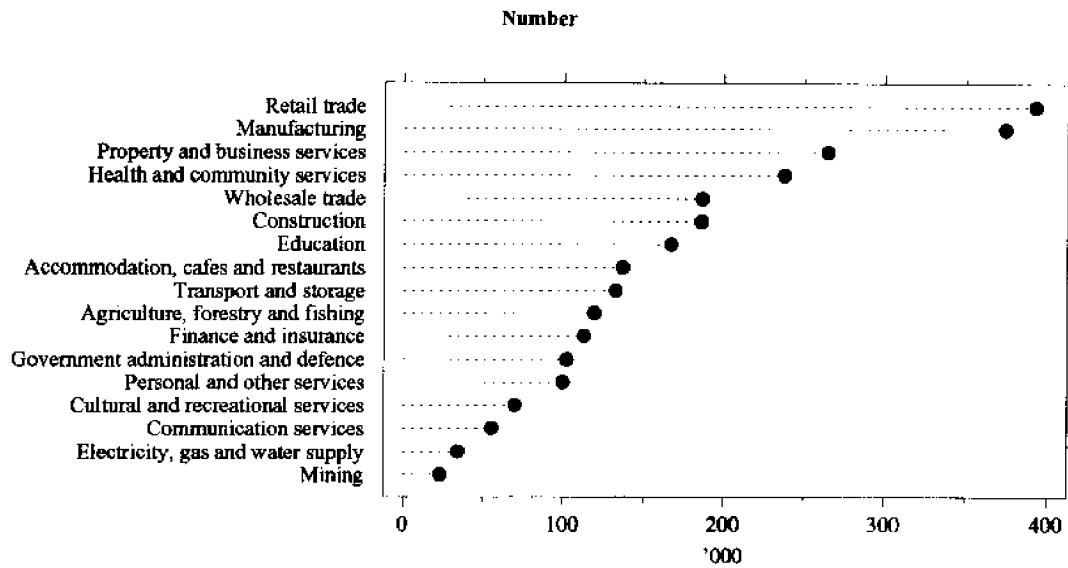


TABLE 9. EMPLOYED PERSONS: OCCUPATION, NSW
(^{'000})

Major and minor occupation group	Males			Females			Persons		
	Feb- ruary 1994	Nov- ember 1994	Feb- ruary 1995	Feb- ruary 1994	Nov- ember 1994	Feb- ruary 1995	Feb- ruary 1994	Nov- ember 1994	Feb- ruary 1995
<i>Managers and administrators</i>	227.3	226.0	213.1	80.7	86.4	67.3	308.0	312.3	280.4
Legislators and government appointed officials	* 0.0	* 0.0	* 0.3	* 0.3	* 0.3	* 0.0	* 0.3	* 0.3	* 0.3
General managers	13.5	22.2	21.8	* 2.5	5.8	* 3.9	16.0	28.0	25.7
Specialist managers	50.9	49.2	51.0	20.1	13.3	16.7	71.0	62.4	67.7
Farmers and farm managers	49.3	52.5	46.4	21.1	21.8	13.7	70.4	74.3	60.0
Managing supervisors (sales and service)	74.4	69.6	64.0	32.6	41.6	30.1	107.0	111.1	94.1
Managing supervisors (other business)	39.2	32.6	29.6	* 4.0	* 3.6	* 3.0	43.2	36.2	32.6
<i>Professionals</i>	215.7	216.4	222.6	149.3	169.0	163.6	365.1	385.4	386.2
Natural scientists	7.1	9.5	9.2	* 1.8	* 4.5	* 2.8	8.9	14.0	12.0
Building professionals and engineers	38.2	36.4	39.2	* 1.2	* 1.2	* 2.1	39.5	37.6	41.3
Health diagnosis and treatment practitioners	21.4	17.0	20.0	14.9	19.1	21.0	36.3	36.1	41.0
School teachers	21.0	25.1	24.7	51.0	56.6	53.7	72.0	81.7	78.4
Other teachers and instructors	18.4	18.3	15.3	17.3	21.1	15.4	35.6	39.4	30.7
Social professionals	19.2	14.4	16.5	8.8	7.0	7.2	28.0	21.4	23.7
Business professionals	65.7	66.7	69.9	33.1	35.1	35.1	98.8	101.8	105.0
Artists and related professionals	16.1	17.8	18.5	10.8	15.6	15.0	26.9	33.4	33.5
Miscellaneous professionals	8.5	11.2	9.2	10.5	8.7	11.3	19.0	19.9	20.5
<i>Para-professionals</i>	83.2	74.1	75.1	75.8	76.6	74.0	159.0	150.7	149.1
Medical and science technical officers and technicians	* 2.9	7.0	6.2	* 3.6	* 4.7	* 5.2	6.5	11.7	11.4
Engineering and building associates and technicians	28.0	18.9	23.7	* 2.3	* 1.8	* 1.5	30.3	20.8	25.3
Air and sea transport technical workers	5.4	* 5.1	* 5.2	* 0.3	* 0.3	* 0.0	5.7	5.4	* 5.2
Registered nurses	5.4	5.8	* 3.9	52.7	52.0	51.0	58.1	57.8	54.9
Police	12.1	10.7	10.9	* 1.2	* 1.8	* 1.7	13.4	12.5	12.6
Miscellaneous para-professionals	29.4	26.6	25.2	15.6	16.0	14.5	45.0	42.5	39.7
<i>Tradespersons</i>	327.6	333.0	347.0	40.7	36.4	38.7	368.4	369.4	385.7
Metal fitting and machining tradespersons	32.4	33.9	34.4	* 0.4	* 0.0	* 0.6	32.7	33.9	35.0
Other metal tradespersons	36.1	26.2	33.0	* 1.0	* 0.3	* 0.9	37.0	26.5	33.9
Electrical and electronics tradespersons	55.9	62.7	69.5	* 1.4	* 0.6	* 0.9	57.3	63.3	70.5
Building tradespersons	82.9	80.5	81.1	* 2.2	* 0.6	* 0.3	85.1	81.1	81.5
Printing tradespersons	8.8	11.6	11.4	* 1.2	* 2.2	* 4.8	10.0	13.8	16.1
Vehicle tradespersons	46.3	43.4	46.0	* 0.0	* 0.9	* 0.3	46.3	44.3	46.3
Food tradespersons	28.1	38.5	29.8	14.0	8.6	8.1	42.1	47.1	37.9
Amenity horticultural tradespersons	12.2	11.7	12.9	* 1.2	* 1.7	* 1.7	13.4	13.4	14.6
Miscellaneous tradespersons	25.0	24.5	28.9	19.5	21.5	21.0	44.4	46.1	49.9
<i>Clerks</i>	102.9	109.6	113.1	355.2	355.4	349.5	458.2	465.0	462.6
Stenographers and typists	* 0.6	* 1.8	* 1.6	94.2	93.3	94.5	94.8	95.1	96.2
Data processing and business machine operators	9.0	12.5	10.5	31.9	27.8	26.6	40.9	40.3	37.1
Numerical clerks	38.1	39.8	37.4	107.1	118.2	120.8	145.2	158.0	158.2
Filing, sorting and copying clerks	10.8	12.8	12.9	18.7	26.4	19.0	29.5	39.2	31.9
Material recording and despatching clerks	14.3	16.4	18.3	7.9	11.1	9.7	22.2	27.5	28.0
Receptionists, telephonists and messengers	11.3	12.7	11.9	67.4	53.8	57.2	78.7	66.4	69.1
Miscellaneous clerks	18.8	13.6	20.5	28.0	24.8	21.7	46.8	38.4	42.2
<i>Salespersons and personal service workers</i>	140.2	148.8	161.4	239.4	275.2	280.4	379.6	424.0	441.8
Investment, insurance and real estate salespersons	25.7	23.8	18.8	7.5	7.9	8.7	33.2	31.7	27.5
Sales representatives	28.6	26.9	34.8	9.5	9.1	14.2	38.1	36.0	48.9
Sales assistants	48.5	68.0	67.4	102.8	119.1	120.4	151.3	187.1	187.8
Tellers, cashiers and ticket salespersons	6.4	7.7	9.6	32.7	43.2	43.9	39.1	50.9	53.5
Miscellaneous salespersons	25.2	18.6	25.2	43.9	46.3	45.3	69.1	64.9	70.5
Personal service workers	5.9	* 3.8	5.6	42.9	49.6	48.0	48.8	53.5	53.6
<i>Plant and machine operators, and drivers</i>	149.3	143.6	147.6	30.4	24.8	21.2	179.7	168.4	168.9
Road and rail transport drivers	81.4	82.1	88.9	7.2	* 4.4	* 3.2	88.6	86.5	92.2
Mobile plant operators (except transport)	31.4	27.6	28.4	* 0.3	* 0.0	* 0.7	31.7	27.6	29.0
Stationary plant operators	16.1	16.3	12.8	* 0.8	* 1.2	* 0.0	16.8	17.5	12.8
Machine operators	20.4	17.6	17.5	22.1	19.2	17.3	42.5	36.8	34.8
<i>Labourers and related workers</i>	246.3	282.8	284.5	136.3	127.0	140.8	382.5	409.8	425.3
Trades assistants and factory hands	71.2	75.1	73.7	29.9	34.0	34.3	101.1	109.1	108.0
Agricultural labourers and related workers	28.1	29.4	28.9	10.5	8.4	16.1	38.6	37.8	45.0
Cleaners	21.5	35.8	37.1	40.4	36.4	41.5	61.9	72.2	78.6
Construction and mining labourers	38.7	37.9	41.0	* 0.3	* 0.6	* 0.3	39.0	38.5	41.3
Miscellaneous labourers and related workers	86.8	104.6	103.9	55.1	47.6	48.6	141.9	152.1	152.4
Total employed	1,492.6	1,534.2	1,564.4	1,107.9	1,150.7	1,135.4	2,600.5	2,684.9	2,699.8

**ANNUAL CHANGE IN EMPLOYMENT BY OCCUPATION GROUP, NSW,
FEBRUARY 1994 TO FEBRUARY 1995**

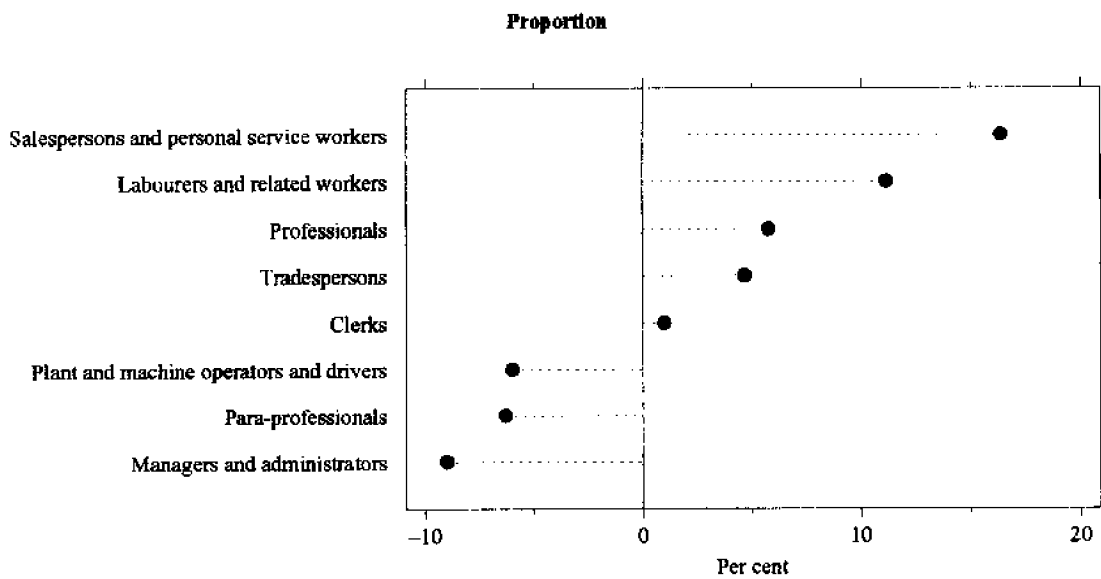
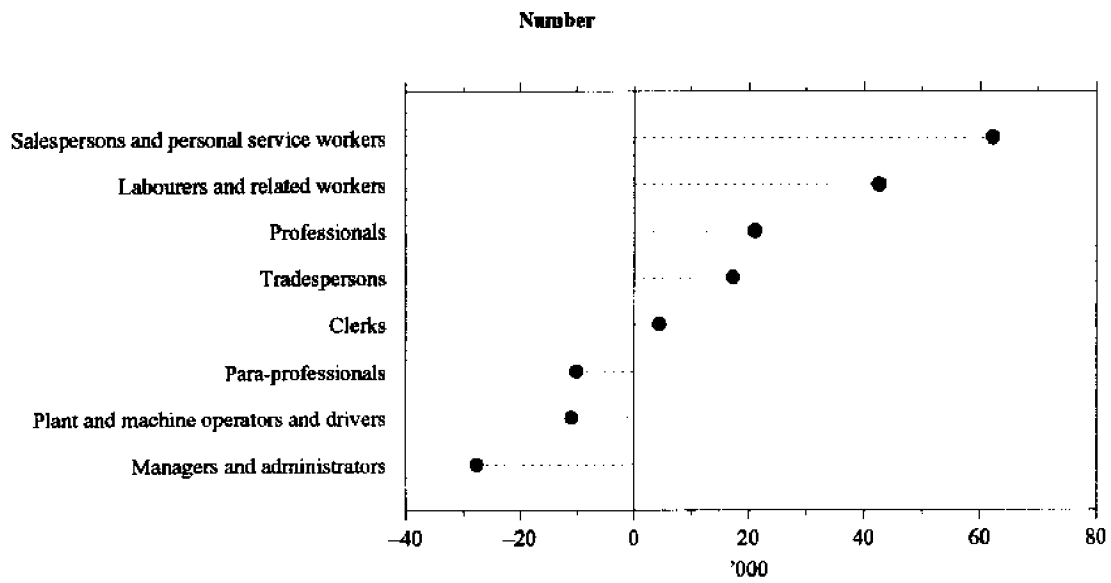


TABLE 10. UNEMPLOYED PERSONS: AGE, NSW
(^{'000})

Month	Age group (years)						Total unemployed
	15-19	20-24	25-34	35-44	45-54	55 and over	
MALES							
1994—							
February	33.4	34.8	48.6	34.8	25.5	19.6	196.7
1994—							
November	21.6	22.0	36.2	27.2	21.7	14.9	143.6
December	31.9	24.5	37.7	27.2	19.9	16.6	157.8
1995—							
January	31.6	24.8	43.1	32.1	19.1	15.5	166.2
February	28.0	27.4	38.6	31.4	17.7	14.6	157.6
FEMALES							
1994—							
February	27.5	23.5	30.9	24.0	19.7	* 4.2	129.8
1994—							
November	19.5	12.2	26.1	22.5	15.9	* 2.3	98.5
December	27.3	16.6	25.8	20.2	17.8	* 3.5	111.1
1995—							
January	29.3	18.6	24.3	19.0	14.4	* 2.5	108.1
February	29.2	24.7	33.9	22.0	15.7	6.6	132.0
PERSONS							
1994—							
February	60.9	58.3	79.5	58.8	45.2	23.8	326.5
1994—							
November	41.0	34.2	62.3	49.7	37.6	17.2	242.0
December	59.1	41.0	63.5	47.4	37.7	20.1	268.9
1995—							
January	60.9	43.4	67.4	51.1	33.4	18.0	274.2
February	57.2	52.1	72.4	53.4	33.4	21.2	289.7

TABLE 11. UNEMPLOYED PERSONS: UNEMPLOYMENT RATE BY AGE, NSW
(per cent)

Month	Age group (years)						Total unemployment rate
	15-19	20-24	25-34	35-44	45-54	55 and over	
MALES							
1994—							
February	26.3	16.6	11.4	8.4	7.9	10.3	11.6
1994—							
November	18.5	10.6	8.5	6.6	6.5	8.1	8.6
December	23.4	11.5	8.8	6.6	5.9	8.8	9.2
1995—							
January	23.9	11.7	10.1	7.8	5.7	8.0	9.7
February	21.2	13.0	9.1	7.5	5.2	7.5	9.2
FEMALES							
1994—							
February	24.5	12.9	9.7	7.9	8.4	* 4.9	10.5
1994—							
November	17.0	6.7	8.3	7.1	6.6	* 2.9	7.9
December	20.8	8.7	8.0	6.4	7.5	* 4.4	8.7
1995—							
January	22.5	10.1	7.7	6.5	6.2	* 3.3	8.8
February	23.8	13.0	10.2	7.1	6.8	8.1	10.4
PERSONS							
1994—							
February	25.5	14.9	10.7	8.2	8.1	8.6	11.2
1994—							
November	17.8	8.8	8.4	6.8	6.6	6.5	8.3
December	22.1	10.1	8.5	6.5	6.6	7.5	9.0
1995—							
January	23.2	10.9	9.1	7.2	5.9	6.7	9.3
February	22.5	13.0	9.6	7.3	5.8	7.7	9.7

TABLE 12. UNEMPLOYED PERSONS: INDUSTRY (a) AND OCCUPATION OF LAST FULL-TIME JOB, NSW, FEBRUARY 1995 ('000)

	Males	Females	Persons
<i>Had worked for two weeks or more in a full-time job in the last two years</i>	71.7	38.6	110.3
Industry division---			
Agriculture, forestry and fishing	* 3.6	* 2.5	6.1
Manufacturing	19.4	6.3	25.8
Construction	11.7	* 0.0	11.7
Wholesale trade	5.3	* 1.4	6.7
Retail trade	8.3	7.6	16.0
Accommodation, cafes and restaurants	* 4.8	6.0	10.8
Transport and storage	* 4.7	* 0.3	* 5.0
Finance and insurance	* 0.6	* 0.3	* 1.0
Property and business services	* 3.4	* 4.0	7.5
Education	* 2.4	* 0.3	* 2.7
Health and community services	* 1.3	* 4.3	5.6
Cultural and recreational services	* 0.3	* 2.8	* 3.1
Personal and other services	* 2.0	* 1.2	* 3.2
Other industries (b)	* 3.7	* 1.4	* 5.1
Major occupation group---			
Managers and administrators	* 2.6	* 0.6	* 3.2
Professionals	* 4.3	* 3.4	7.6
Para-professionals	* 0.9	* 1.2	* 2.1
Tradespersons	16.6	* 0.4	17.1
Clerks	* 3.6	9.6	13.3
Salespersons and personal service workers	7.5	11.5	18.9
Plant and machine operators, and drivers	11.1	* 1.6	12.7
Labourers and related workers	25.1	10.3	35.3
<i>Had not worked full-time for two weeks or more in the last two years</i>	83.2	88.8	172.0
Looking for first job	21.5	22.6	44.1
Had worked at some time in the past	61.7	66.2	127.9
<i>Stood down</i>	* 2.7	* 4.6	7.4
Total unemployed	157.6	132.0	289.7

(a) Industry data are now classified according to the Australian and New Zealand Standard Industrial Classification. See the Explanatory Notes for more details. (b) Comprises Mining; Electricity, gas and water supply; Communication services; and Government administration and defence.

UNEMPLOYMENT RATE BY AGE, NSW

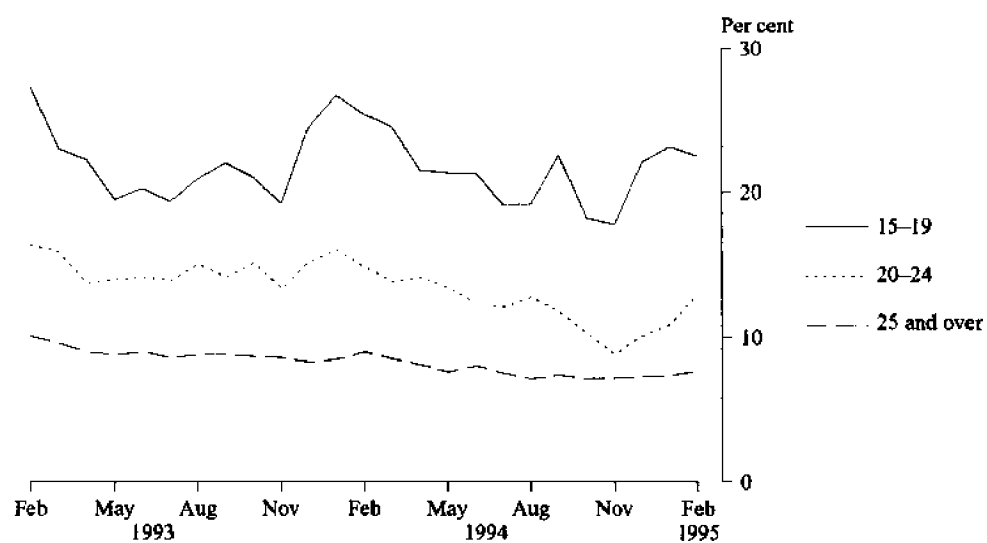


TABLE 13. UNEMPLOYED PERSONS: DURATION OF UNEMPLOYMENT, NSW

Duration of unemployment (weeks)	Males		Females		Persons				
	February 1994	February 1995	February 1994	February 1995	February 1994	November 1994	December 1994	January 1995	February 1995
— '000 —									
Under 52	109.9	92.1	86.5	91.1	196.4	147.7	170.6	173.0	183.2
Under 2	5.5	9.0	11.4	11.9	17.0	17.2	27.3	18.9	20.9
2 and under 4	11.2	11.2	9.9	13.3	21.1	20.9	31.5	25.1	24.5
4 and under 8	19.6	22.0	16.8	21.9	36.3	22.3	23.4	41.2	43.9
8 and under 13	20.3	16.3	17.8	14.2	38.1	16.1	20.5	25.3	30.5
13 and under 26	27.3	14.3	14.3	15.3	41.6	26.7	23.5	27.0	29.6
26 and under 39	15.6	14.6	13.9	11.1	29.5	25.2	27.4	22.6	25.6
39 and under 52	10.4	* 4.7	* 2.5	* 3.3	12.9	19.3	17.1	13.0	8.1
52 and over	86.8	65.5	43.3	41.0	130.1	94.3	98.3	101.2	106.5
52 and under 104	39.6	25.0	21.8	14.4	61.4	40.3	41.6	43.4	39.4
104 and over	47.2	40.6	21.4	26.6	68.6	54.0	56.6	57.8	67.1
Total unemployed	196.7	157.6	129.8	132.0	326.5	242.0	268.9	274.2	289.7
— Weeks —									
Average	67.4	65.3	51.8	51.8	61.2	71.2	58.3	61.7	59.2
Median	36	28	17	14	26	33	26	25	21

TABLE 14. UNEMPLOYED PERSONS: UNEMPLOYMENT RATE BY BIRTHPLACE AND PERIOD OF ARRIVAL, NSW (per cent)

	February 1994	November 1994	December 1994	January 1995	February 1995
Birthplace—					
Australia	10.7	7.5	7.9	8.6	8.9
Outside Australia	12.4	10.3	12.1	11.3	11.8
Main English speaking countries	8.3	6.2	7.0	7.1	8.1
Other countries	14.6	12.4	14.6	13.5	13.8
Period of arrival of overseas born —					
Before 1961	6.0	6.5	7.0	5.2	5.9
1961–1970	10.0	7.9	9.2	7.3	8.6
1971–1980	10.2	8.9	10.1	11.7	11.5
1981–1985	14.9	11.4	13.2	10.1	10.7
1986–1990	15.2	10.2	14.7	14.1	15.6
1991 to survey date	27.6	24.4	24.8	24.1	22.2
Total unemployment rate	11.2	8.3	9.0	9.3	9.7

UNEMPLOYMENT RATE BY PERIOD OF ARRIVAL OF OVERSEAS BORN, NSW, FEBRUARY 1995

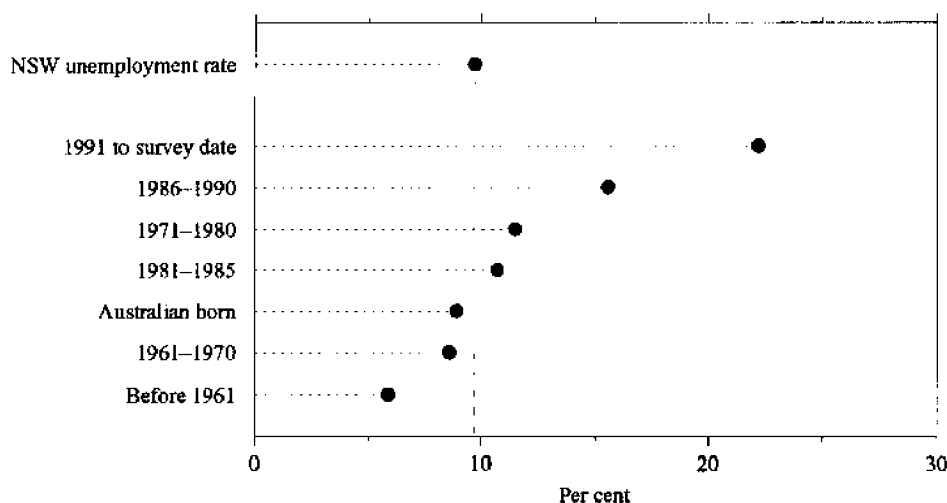


TABLE 15. UNEMPLOYED PERSONS: DURATION OF UNEMPLOYMENT BY AGE, NSW

Month	Duration of unemployment (weeks)					Total unemployed persons ('000)	Average duration (weeks)	Median duration (weeks)
	Under 13 ('000)	13 and under 26 ('000)	26 and under 39 ('000)	39 and under 104 ('000)	104 and over ('000)			
15-19								
1994—February	35.5	6.7	* 3.7	11.4	* 3.6	60.9	24.5	10
1994—December	36.6	6.3	5.3	8.5	* 2.5	59.1	20.3	4
1995—January	44.9	* 4.2	* 3.9	6.5	* 1.4	60.9	15.6	5
February	34.8	7.0	5.8	7.0	* 2.7	57.2	22.0	9
20-24								
1994—February	21.6	7.7	* 4.6	13.1	11.3	58.3	53.5	24
1994—December	16.7	* 3.3	5.6	9.9	5.6	41.0	48.2	26
1995—January	17.5	5.7	* 2.8	8.5	8.9	43.4	61.3	19
February	24.6	5.4	* 4.7	7.5	10.0	52.1	52.4	13
25-34								
1994—February	23.4	13.4	6.6	18.5	17.6	79.5	62.5	26
1994—December	22.5	6.7	6.7	13.8	13.7	63.5	51.0	26
1995—January	22.8	7.2	8.9	14.3	14.2	67.4	66.3	26
February	26.5	9.0	7.0	14.1	15.9	72.4	60.8	26
35-44								
1994—February	18.5	7.4	6.5	12.6	13.8	58.8	74.2	30
1994—December	11.8	* 4.1	5.8	12.5	13.2	47.4	81.7	49
1995—January	11.6	6.5	* 5.0	13.1	15.0	51.1	77.8	50
February	18.7	* 4.4	* 5.1	9.1	16.0	53.4	67.9	32
45 AND OVER								
1994—February	13.5	6.3	8.1	18.8	22.4	69.0	87.6	52
1994—December	15.0	* 3.1	* 4.0	14.0	21.6	57.8	93.2	52
1995—January	13.6	* 3.4	* 2.2	14.0	18.3	51.4	94.8	52
February	15.4	* 3.7	* 3.1	9.8	22.6	54.6	94.0	52
TOTAL								
1994—February	112.5	41.6	29.5	74.3	68.6	326.5	61.2	26
1994—December	102.7	23.5	27.4	58.7	56.6	268.9	58.3	26
1995—January	110.4	27.0	22.6	56.4	57.8	274.2	61.7	25
February	119.9	29.6	25.6	47.4	67.1	289.7	59.2	21

TABLE 16. LABOUR FORCE STATUS, SYDNEY (MSR)

Month	Employed		Unemployed			Labour force ('000)	Not in labour force ('000)	Civilian population aged 15 and over ('000)	Unemployment rate (per cent)	Participation rate (per cent)	
	Full-time workers ('000)	Part-time workers ('000)	Total ('000)	Looking for full-time work ('000)	Looking for part-time work ('000)						Total ('000)
MALES											
February—											
1991	919.3	69.2	988.5	76.1	10.8	86.9	1,075.4	340.9	1,416.3	8.1	75.9
1992	887.0	85.7	972.7	97.5	10.9	108.3	1,081.0	351.7	1,432.8	10.0	75.5
1993	860.1	73.1	933.2	120.0	11.1	131.1	1,064.3	381.8	1,446.1	12.3	73.6
1993—											
December	883.1	96.8	979.9	104.7	12.7	117.4	1,097.3	359.4	1,456.7	10.7	75.3
1994—											
January	877.5	84.7	962.3	102.0	14.5	116.5	1,078.8	379.0	1,457.7	10.8	74.0
February	884.7	94.6	979.3	102.1	11.8	113.9	1,093.2	365.6	1,458.8	10.4	74.9
November	888.4	103.8	992.1	78.1	8.3	86.5	1,078.6	390.2	1,468.8	8.0	73.4
December	910.3	99.2	1,009.5	84.1	13.0	97.0	1,106.6	363.0	1,469.5	8.8	75.3
1995—											
January	898.9	102.5	1,001.4	84.9	13.0	97.9	1,099.3	371.3	1,470.6	8.9	74.8
February	912.6	96.6	1,009.2	82.1	11.2	93.3	1,102.5	369.1	1,471.6	8.5	74.9
MARRIED FEMALES											
February—											
1991	243.9	169.3	413.2	14.0	10.1	24.0	437.2	387.5	824.8	5.5	53.0
1992	246.2	164.6	410.8	20.4	11.3	31.7	442.5	393.1	835.6	7.2	53.0
1993	240.5	158.4	399.0	21.7	12.4	34.1	433.1	392.4	825.5	7.9	52.5
1993—											
December	254.7	168.3	423.0	17.2	8.9	26.1	449.1	376.1	825.2	5.8	54.4
1994—											
January	245.9	161.9	407.8	19.2	6.1	25.3	433.1	394.7	827.8	5.8	52.3
February	259.5	174.6	434.1	21.5	11.0	32.5	466.6	369.5	836.1	7.0	55.8
November	250.4	183.1	433.4	13.3	9.9	23.2	456.7	382.4	839.1	5.1	54.4
December	253.5	174.1	427.7	11.8	10.1	21.9	449.6	383.5	833.1	4.9	54.0
1995—											
January	252.6	166.0	418.6	14.2	7.9	22.1	440.7	405.7	846.3	5.0	52.1
February	249.5	175.1	424.6	18.6	10.5	29.1	453.8	392.2	846.0	6.4	53.6
ALL FEMALES											
February—											
1991	473.2	238.7	711.9	39.5	23.0	62.5	774.4	702.7	1,477.1	8.1	52.4
1992	476.1	236.8	712.9	55.8	21.7	77.5	790.4	704.8	1,495.2	9.8	52.9
1993	469.8	239.4	709.2	56.0	23.9	79.9	789.1	719.6	1,508.7	10.1	52.3
1993—											
December	489.4	257.4	746.8	44.3	23.4	67.7	814.5	705.4	1,519.8	8.3	53.6
1994—											
January	482.9	254.2	737.1	56.3	18.1	74.4	811.5	709.4	1,520.9	9.2	53.4
February	488.8	262.4	751.2	53.6	23.1	76.8	827.9	694.0	1,522.0	9.3	54.4
November	480.0	286.3	766.3	42.1	18.9	60.9	827.2	705.3	1,532.5	7.4	54.0
December	495.5	274.8	770.3	45.5	23.1	68.7	839.0	694.2	1,533.2	8.2	54.7
1995—											
January	489.1	258.1	747.2	46.2	19.7	65.9	813.1	720.9	1,534.0	8.1	53.0
February	484.9	264.4	749.3	58.4	23.8	82.2	831.5	703.4	1,534.9	9.9	54.2
PERSONS											
February—											
1991	1,392.6	307.9	1,700.4	115.6	33.8	149.4	1,849.8	1,043.6	2,893.4	8.1	63.9
1992	1,363.1	322.5	1,685.6	153.3	32.5	185.8	1,871.4	1,056.5	2,928.0	9.9	63.9
1993	1,329.9	312.5	1,642.4	176.0	35.0	211.0	1,853.4	1,101.4	2,954.8	11.4	62.7
1993—											
December	1,372.5	354.2	1,726.7	148.9	36.1	185.1	1,911.8	1,064.8	2,976.5	9.7	64.2
1994—											
January	1,360.4	339.0	1,699.4	158.2	32.6	190.9	1,890.3	1,088.4	2,978.6	10.1	63.5
February	1,373.5	357.0	1,730.5	155.7	34.9	190.7	1,921.1	1,059.6	2,980.7	9.9	64.5
November	1,368.4	390.0	1,758.4	120.2	27.2	147.4	1,905.8	1,095.5	3,001.3	7.7	63.5
December	1,405.8	374.0	1,779.9	129.6	36.1	165.7	1,945.6	1,057.1	3,002.7	8.5	64.8
1995—											
January	1,388.0	360.5	1,748.5	131.1	32.7	163.9	1,912.4	1,092.2	3,004.6	8.6	63.6
February	1,397.5	361.0	1,758.5	140.5	35.0	175.5	1,934.0	1,072.4	3,006.4	9.1	64.3

TABLE 17. LABOUR FORCE STATUS, BALANCE OF NSW (MSR)

Month	Employed			Unemployed			Labour force ('000)	Not in labour force ('000)	Civilian population aged 15 and over ('000)	Unemployment rate (per cent)	Participation rate (per cent)
	Full-time workers ('000)	Part-time workers ('000)	Total ('000)	Looking for full-time work ('000)	Looking for part-time work ('000)	Total ('000)					
MALES											
February—											
1991	502.5	47.4	549.9	55.5	* 2.3	57.8	607.7	229.8	837.4	9.5	72.6
1992	480.4	51.4	531.8	74.2	* 4.4	78.7	610.5	236.6	847.0	12.9	72.1
1993	468.6	48.6	517.3	86.7	* 5.1	91.9	609.1	245.2	854.3	15.1	71.3
1993—											
December	473.8	49.7	523.5	78.9	* 3.9	82.8	606.3	254.7	860.9	13.7	70.4
1994—											
January	460.7	52.8	513.5	77.3	5.4	82.7	596.2	265.5	861.6	13.9	69.2
February	459.5	53.9	513.4	77.7	* 5.1	82.8	596.2	266.2	862.4	13.9	69.1
November	480.9	61.1	542.0	50.9	6.3	57.1	599.1	271.1	870.2	9.5	68.9
December	485.5	63.7	549.1	55.9	* 4.8	60.8	609.9	261.6	871.5	10.0	70.0
1995—											
January	485.9	56.8	542.7	62.5	5.7	68.2	610.9	262.4	873.2	11.2	70.0
February	496.1	59.1	555.2	55.8	8.6	64.3	619.5	255.4	874.9	10.4	70.8
MARRIED FEMALES											
February—											
1991	122.3	116.1	238.4	9.2	5.4	14.6	253.0	282.2	535.2	5.8	47.3
1992	120.3	115.7	236.0	14.6	5.0	19.6	255.6	274.6	530.2	7.7	48.2
1993	124.9	116.1	241.0	16.7	* 4.4	22.0	263.0	259.8	522.8	8.4	50.3
1993—											
December	128.5	126.3	254.8	11.1	* 3.1	14.2	269.0	266.6	535.6	5.3	50.2
1994—											
January	130.2	105.6	235.8	13.8	* 3.2	17.0	252.8	290.8	543.6	6.7	46.5
February	132.3	109.3	241.6	17.3	* 5.1	22.4	264.0	280.9	544.9	8.5	48.5
November	134.3	118.8	253.1	12.2	8.0	20.2	273.3	271.7	545.0	7.4	50.1
December	134.1	122.7	256.8	10.3	6.5	16.8	273.6	271.5	545.1	6.1	50.2
1995—											
January	127.1	117.3	244.5	10.2	* 5.2	15.4	259.8	286.6	546.4	5.9	47.6
February	133.8	123.3	257.1	11.7	9.6	21.3	278.4	270.4	548.8	7.7	50.7
ALL FEMALES											
February—											
1991	197.2	161.4	358.6	26.0	11.2	37.1	395.7	456.6	852.4	9.4	46.4
1992	200.5	160.0	360.5	35.2	13.2	48.4	408.9	455.0	863.9	11.8	47.3
1993	200.9	159.1	360.1	44.4	11.1	55.6	415.6	457.1	872.7	13.4	47.6
1993—											
December	199.7	178.9	378.6	32.8	9.6	42.4	421.0	459.9	880.9	10.1	47.8
1994—											
January	195.1	156.0	351.1	36.9	9.7	46.6	397.7	484.0	881.7	11.7	45.1
February	198.7	158.0	356.7	41.7	11.3	53.0	409.7	472.8	882.5	12.9	46.4
November	214.9	169.5	384.4	24.6	12.9	37.5	422.0	469.8	891.8	8.9	47.3
December	217.1	180.3	397.4	28.1	14.3	42.4	439.8	453.3	893.1	9.6	49.2
1995—											
January	203.6	175.5	379.0	28.5	13.6	42.1	421.2	473.4	894.6	10.0	47.1
February	205.4	180.6	386.0	30.9	19.0	49.9	435.9	460.1	896.0	11.4	48.6
PERSONS											
February—											
1991	699.7	208.8	908.5	81.4	13.5	94.9	1,003.4	686.4	1,689.8	9.5	59.4
1992	681.0	211.4	892.3	109.4	17.6	127.0	1,019.4	691.6	1,710.9	12.5	59.6
1993	669.6	207.7	877.3	131.2	16.3	147.5	1,024.8	702.3	1,727.1	14.4	59.3
1993—											
December	673.5	228.6	902.1	111.7	13.5	125.2	1,027.3	714.5	1,741.8	12.2	59.0
1994—											
January	655.8	208.8	864.6	114.2	15.1	129.3	993.9	749.5	1,743.3	13.0	57.0
February	658.2	211.8	870.1	119.4	16.5	135.9	1,005.9	738.9	1,744.9	13.5	57.6
November	695.9	230.6	926.5	75.5	19.2	94.7	1,021.1	740.9	1,762.0	9.3	58.0
December	702.5	244.0	946.6	84.0	19.2	103.2	1,049.7	714.9	1,764.7	9.8	59.5
1995—											
January	689.5	232.2	921.7	91.0	19.3	110.3	1,032.1	735.7	1,767.8	10.7	58.4
February	701.5	239.7	941.2	86.7	27.5	114.2	1,055.4	715.5	1,770.9	10.8	59.6

TABLE 18. LABOUR FORCE STATUS (a), REGIONS OF NSW

	<i>Month</i>	<i>Employed (000)</i>	<i>Unemployed (000)</i>	<i>Labour force (000)</i>	<i>Not in labour force (000)</i>	<i>Unemp- loyment rate (per cent)</i>	<i>Partici- pation rate (per cent)</i>
INNER SYDNEY AND INNER WESTERN SYDNEY (SRs)							
MALES	1994— February	102.5	9.8	112.4	46.5	8.8	70.7
	1994— December	115.7	12.0	127.7	46.1	9.4	73.5
	1995— January	118.6	14.4	133.0	50.0	10.8	72.7
	1995— February	116.9	12.7	129.6	43.4	9.8	74.9
FEMALES	1994— February	89.6	6.8	96.5	69.0	7.1	58.3
	1994— December	89.6	5.6	95.3	75.9	5.9	55.7
	1995— January	91.7	7.0	98.7	81.5	7.1	54.8
	1995— February	88.9	10.8	99.8	76.8	10.9	56.5
PERSONS	1994— February	192.2	16.6	208.8	115.5	8.0	64.4
	1994— December	205.4	17.6	223.0	122.0	7.9	64.6
	1995— January	210.2	21.4	231.7	131.4	9.2	63.8
	1995— February	205.8	23.6	229.4	120.2	10.3	65.6
INNER SYDNEY (SR)							
MALES	1994— February	66.5	5.7	72.2	29.7	7.9	70.8
	1994— December	77.1	6.9	84.0	29.9	8.2	73.8
	1995— January	75.9	9.2	85.1	30.7	10.8	73.5
	1995— February	71.9	7.3	79.2	25.6	9.2	75.6
FEMALES	1994— February	56.8	4.6	61.4	38.7	7.5	61.3
	1994— December	58.2	* 4.0	62.2	42.4	* 6.4	59.5
	1995— January	61.9	* 4.0	65.8	43.1	* 6.0	60.4
	1995— February	56.8	6.0	62.8	44.2	9.6	58.7
PERSONS	1994— February	123.3	10.3	133.6	68.4	7.7	66.1
	1994— December	135.3	10.9	146.2	72.3	7.4	66.9
	1995— January	137.7	13.2	150.9	73.8	8.7	67.2
	1995— February	128.7	13.3	142.0	69.9	9.4	67.0
EASTERN SUBURBS (SR)							
MALES	1994— February	60.0	8.7	68.7	26.4	12.6	72.2
	1994— December	69.9	7.7	77.6	32.1	10.0	70.7
	1995— January	71.8	6.5	78.3	32.9	8.3	70.4
	1995— February	70.4	7.8	78.2	30.3	10.0	72.1
FEMALES	1994— February	56.1	5.8	61.9	42.2	9.3	59.5
	1994— December	52.3	5.6	58.0	48.3	9.7	54.6
	1995— January	56.5	3.9	60.5	48.9	6.5	55.3
	1995— February	54.9	7.2	62.1	47.1	11.5	56.9
PERSONS	1994— February	116.1	14.4	130.5	68.5	11.0	65.6
	1994— December	122.2	13.4	135.6	80.4	9.9	62.8
	1995— January	128.3	10.5	138.7	81.7	7.5	62.9
	1995— February	125.3	15.0	140.3	77.4	10.7	64.5

TABLE 18. LABOUR FORCE STATUS (a), REGIONS OF NSW—continued

	Month	Employed (<i>'000</i>)	Unemployed (<i>'000</i>)	Labour force (<i>'000</i>)	Not in labour force (<i>'000</i>)	Unemp- loyment rate (per cent)	Partici- pation rate (per cent)
ST GEORGE-SUTHERLAND (SR)							
MALES	1994— February	126.0	9.9	135.9	37.2	7.3	78.5
	1994— December	113.5	10.7	124.2	40.7	8.6	75.3
	1995— January	115.2	10.6	125.8	40.7	8.4	75.6
	February	120.1	7.2	127.4	42.2	5.7	75.1
FEMALES	1994— February	97.1	7.9	105.0	69.6	7.5	60.1
	1994— December	87.6	4.2	91.8	80.7	4.5	53.2
	1995— January	83.4	6.0	89.4	79.8	6.7	52.8
	February	84.4	5.4	89.8	79.0	6.0	53.2
PERSONS	1994— February	223.1	17.8	241.0	106.8	7.4	69.3
	1994— December	201.1	14.9	216.0	121.4	6.9	64.0
	1995— January	198.6	16.6	215.2	120.5	7.7	64.1
	February	204.5	12.6	217.1	121.2	5.8	64.2
CANTERBURY-BANKSTOWN (SR)							
MALES	1994— February	81.1	11.4	92.5	29.5	12.3	75.8
	1994— December	75.7	11.1	86.8	34.5	12.8	71.6
	1995— January	75.2	11.8	87.0	34.0	13.5	71.9
	February	78.3	8.7	87.0	33.6	10.0	72.1
FEMALES	1994— February	55.9	3.7	59.6	59.9	6.2	49.9
	1994— December	54.0	11.3	65.3	59.5	17.3	52.3
	1995— January	49.2	8.9	58.1	65.1	15.4	47.2
	February	50.2	10.5	60.7	62.3	17.3	49.3
PERSONS	1994— February	137.0	15.1	152.1	89.4	9.9	63.0
	1994— December	129.6	22.4	152.1	93.9	14.8	61.8
	1995— January	124.4	20.7	145.1	99.1	14.3	59.4
	February	128.5	19.2	147.7	95.9	13.0	60.6
FAIRFIELD-LIVERPOOL AND OUTER SOUTH WESTERN SYDNEY (SRs)							
MALES	1994— February	129.1	22.3	151.4	43.7	14.7	77.6
	1994— December	127.9	16.4	144.3	40.0	11.4	78.3
	1995— January	126.9	16.1	143.0	45.2	11.3	76.0
	February	124.4	18.7	143.1	43.6	13.1	76.6
FEMALES	1994— February	80.5	16.6	97.1	98.4	17.1	49.7
	1994— December	93.8	14.3	108.2	88.2	13.3	55.1
	1995— January	92.4	11.2	103.5	92.7	10.8	52.8
	February	86.1	16.8	102.9	86.6	16.3	54.3
PERSONS	1994— February	209.6	38.9	248.5	142.1	15.7	63.6
	1994— December	221.7	30.7	252.5	128.1	12.2	66.3
	1995— January	219.3	27.3	246.6	137.9	11.1	64.1
	February	210.5	35.5	245.9	130.2	14.4	65.4

TABLE 18. LABOUR FORCE STATUS (a), REGIONS OF NSW—continued

	Month	Employed (<i>'000</i>)	Unemployed (<i>'000</i>)	Labour force (<i>'000</i>)	Not in labour force (<i>'000</i>)	Unemp- loyment rate (per cent)	Partici- pation rate (per cent)
FAIRFIELD-LIVERPOOL (SR)							
MALES	1994— February	72.1	17.7	89.9	30.2	19.7	74.8
	1994— December	70.2	13.2	83.3	25.6	15.8	76.5
	1995— January	69.4	11.9	81.3	30.3	14.7	72.9
	February	67.5	14.8	82.4	27.9	18.0	74.7
FEMALES	1994— February	46.5	12.8	59.2	62.6	21.6	48.6
	1994— December	54.1	7.4	61.4	57.4	12.0	51.7
	1995— January	52.9	6.5	59.4	59.0	11.0	50.2
	February	50.9	11.7	62.6	53.0	18.7	54.2
PERSONS	1994— February	118.6	30.5	149.1	92.9	20.5	61.6
	1994— December	124.2	20.6	144.8	83.0	14.2	63.6
	1995— January	122.2	18.4	140.7	89.3	13.1	61.2
	February	118.4	26.6	145.0	80.9	18.3	64.2
CENTRAL WESTERN SYDNEY (SR)							
MALES	1994— February	54.4	11.9	66.4	28.4	18.0	70.1
	1994— December	61.3	8.4	69.7	29.5	12.1	70.3
	1995— January	57.2	7.3	64.5	28.2	11.4	69.6
	February	56.1	6.2	62.3	28.0	10.0	69.0
FEMALES	1994— February	37.8	6.9	44.7	52.6	15.5	45.9
	1994— December	39.4	4.0	43.4	62.1	9.2	41.2
	1995— January	33.9	5.9	39.8	62.1	14.8	39.0
	February	35.7	3.6	39.3	60.9	9.1	39.2
PERSONS	1994— February	92.2	18.9	111.0	80.9	17.0	57.8
	1994— December	100.8	12.4	113.1	91.6	10.9	55.3
	1995— January	91.1	13.2	104.3	90.3	12.7	53.6
	February	91.7	9.8	101.6	88.9	9.7	53.3
OUTER WESTERN SYDNEY (SR)							
MALES	1994— February	66.3	9.3	75.6	23.1	12.3	76.6
	1994— December	83.1	6.0	89.2	18.0	6.7	83.2
	1995— January	80.5	7.1	87.6	18.8	8.1	82.3
	February	82.4	6.0	88.4	19.8	6.8	81.7
FEMALES	1994— February	52.8	8.1	60.9	48.7	13.3	55.6
	1994— December	61.0	6.2	67.2	44.1	9.3	60.4
	1995— January	58.5	3.6	62.1	46.8	5.7	57.0
	February	57.7	5.4	63.1	47.1	8.6	57.2
PERSONS	1994— February	119.1	17.4	136.5	71.7	12.7	65.5
	1994— December	144.1	12.3	156.4	62.1	7.8	71.6
	1995— January	139.0	10.7	149.7	65.6	7.1	69.5
	February	140.1	11.4	151.5	66.9	7.5	69.4

TABLE 18. LABOUR FORCE STATUS (a), REGIONS OF NSW—continued

	Month	Employed (^{'000})	Unemployed (^{'000})	Labour force (^{'000})	Not in labour force (^{'000})	Unemp- loyment rate (per cent)	Partici- pation rate (per cent)
BLACKTOWN-BAULKHAM HILLS (SR)							
MALES	1994— February	88.2	9.7	97.9	29.4	9.9	76.9
	1994— December	92.1	10.0	102.1	28.8	9.8	78.0
	1995— January	88.0	7.1	95.2	30.3	7.5	75.9
	February	91.7	11.0	102.7	28.1	10.7	78.5
FEMALES	1994— February	66.2	5.9	72.1	62.8	8.2	53.5
	1994— December	70.6	4.4	75.0	63.1	5.8	54.3
	1995— January	65.0	5.8	70.8	64.8	8.2	52.2
	February	72.8	5.4	78.1	62.3	6.9	55.6
PERSONS	1994— February	154.4	15.6	170.1	92.2	9.2	64.8
	1994— December	162.8	14.3	177.1	92.0	8.1	65.8
	1995— January	153.0	12.9	165.9	95.1	7.8	63.6
	February	164.5	16.3	180.8	90.4	9.0	66.7
LOWER NORTHERN SYDNEY (SR)							
MALES	1994— February	73.4	* 4.5	77.8	28.0	* 5.7	73.6
	1994— December	73.0	* 3.1	76.1	21.7	* 4.1	77.8
	1995— January	73.7	4.9	78.6	23.6	6.3	76.9
	February	75.9	* 4.8	80.7	26.2	* 5.9	75.5
FEMALES	1994— February	66.9	* 2.4	69.4	48.5	* 3.5	58.9
	1994— December	71.3	* 2.2	73.5	49.0	* 3.0	60.0
	1995— January	72.7	* 3.8	76.5	50.1	* 4.9	60.4
	February	76.3	4.9	81.2	46.6	6.0	63.5
PERSONS	1994— February	140.3	6.9	147.2	76.5	4.7	65.8
	1994— December	144.3	5.3	149.6	70.8	3.6	67.9
	1995— January	146.4	8.7	155.2	73.7	5.6	67.8
	February	152.2	9.7	161.9	72.8	6.0	69.0
HORNSBY-KU-RING-GAI (SR)							
MALES	1994— February	70.1	4.9	75.1	24.1	6.6	75.7
	1994— December	76.5	3.9	80.3	19.9	4.8	80.1
	1995— January	74.4	3.9	78.3	18.0	4.9	81.3
	February	73.7	* 2.3	76.0	21.2	* 3.0	78.2
FEMALES	1994— February	58.0	3.9	61.9	52.3	6.3	54.2
	1994— December	57.3	3.8	61.0	40.0	6.2	60.4
	1995— January	57.1	* 3.7	60.7	39.4	* 6.0	60.6
	February	56.2	* 3.6	59.8	40.9	* 5.9	59.4
PERSONS	1994— February	128.1	8.8	136.9	76.4	6.4	64.2
	1994— December	133.7	7.6	141.4	59.9	5.4	70.2
	1995— January	131.4	7.5	139.0	57.4	5.4	70.8
	February	129.9	5.8	135.8	62.1	4.3	68.6

TABLE 18. LABOUR FORCE STATUS (a), REGIONS OF NSW—continued

	<i>Month</i>	<i>Employed</i> (<i>'000</i>)	<i>Unemployed</i> (<i>'000</i>)	<i>Labour</i> <i>force</i> (<i>'000</i>)	<i>Not in</i> <i>labour</i> <i>force</i> (<i>'000</i>)	<i>Unemp-</i> <i>loyment</i> <i>rate</i> (<i>per cent</i>)	<i>Partici-</i> <i>pation</i> <i>rate</i> (<i>per cent</i>)
NORTHERN BEACHES (SR) (b)							
MALES	1994— February	68.2	4.5	72.7	19.4	6.3	78.9
	1994— December	67.7	2.6	70.3	17.7	3.7	79.9
	1995— January	62.6	2.6	65.2	18.2	3.9	78.2
	1995— February	64.0	2.3	66.3	18.3	3.5	78.4
FEMALES	1994— February	52.7	3.4	56.1	37.1	6.0	60.2
	1994— December	55.2	2.8	58.0	33.0	4.9	63.8
	1995— January	47.5	* 1.0	48.5	36.5	* 2.1	57.1
	1995— February	50.7	3.2	53.9	35.0	5.9	60.6
PERSONS	1994— February	120.9	7.9	128.9	56.5	6.2	69.5
	1994— December	122.9	5.4	128.4	50.7	4.2	71.7
	1995— January	110.1	3.6	113.7	54.7	3.2	67.5
	1995— February	114.7	5.5	120.2	53.3	4.5	69.3
GOSFORD-WYONG (SR)							
MALES	1994— February	59.8	7.0	66.8	30.0	10.4	69.0
	1994— December	53.1	5.1	58.2	33.9	8.8	63.2
	1995— January	57.3	5.5	62.8	31.5	8.8	66.6
	1995— February	55.3	5.5	60.9	34.5	9.1	63.8
FEMALES	1994— February	37.6	5.2	42.8	52.9	12.1	44.7
	1994— December	38.1	4.2	42.3	50.4	9.9	45.6
	1995— January	39.3	5.2	44.5	53.2	11.6	45.5
	1995— February	35.5	5.5	41.0	58.7	13.5	41.1
PERSONS	1994— February	97.4	12.2	109.6	82.9	11.1	56.9
	1994— December	91.2	9.3	100.5	84.3	9.3	54.4
	1995— January	96.6	10.7	107.3	84.7	10.0	55.9
	1995— February	90.8	11.1	101.9	93.2	10.9	52.2
HUNTER (SR)							
MALES	1994— February	123.4	24.7	148.1	67.0	16.7	68.8
	1994— December	128.6	15.3	144.0	65.5	10.7	68.7
	1995— January	128.4	18.9	147.3	61.0	12.8	70.7
	1995— February	128.7	15.6	144.3	66.2	10.8	68.5
FEMALES	1994— February	93.9	15.2	109.1	112.8	13.9	49.2
	1994— December	82.2	7.5	89.8	104.7	8.4	46.2
	1995— January	81.0	10.4	91.4	107.2	11.4	46.0
	1995— February	79.7	11.8	91.6	106.4	12.9	46.3
PERSONS	1994— February	217.2	39.9	257.1	179.8	15.5	58.8
	1994— December	210.8	22.9	233.7	170.2	9.8	57.9
	1995— January	209.4	29.3	238.7	168.2	12.3	58.7
	1995— February	208.5	27.4	235.9	172.6	11.6	57.7

TABLE 18. LABOUR FORCE STATUS (a), REGIONS OF NSW—continued

	<i>Month</i>	<i>Employed</i> (<i>'000</i>)	<i>Unemployed</i> (<i>'000</i>)	<i>Labour</i> <i>force</i> (<i>'000</i>)	<i>Not in</i> <i>labour</i> <i>force</i> (<i>'000</i>)	<i>Unemp-</i> <i>loyment</i> <i>rate</i> (<i>per cent</i>)	<i>Partici-</i> <i>pation</i> <i>rate</i> (<i>per cent</i>)
NEWCASTLE (SRs)							
MALES	1994— February	104.3	22.2	126.5	58.7	17.5	68.3
	1994— December	108.2	13.9	122.1	59.8	11.4	67.1
	1995— January	110.1	17.7	127.8	55.6	13.9	69.7
	February	108.4	14.9	123.4	59.8	12.1	67.4
FEMALES	1994— February	79.8	13.7	93.5	97.5	14.6	49.0
	1994— December	70.0	6.6	76.6	90.5	8.6	45.9
	1995— January	69.8	9.4	79.2	93.6	11.9	45.8
	February	68.5	10.7	79.2	92.7	13.5	46.1
PERSONS	1994— February	184.1	35.9	220.0	156.2	16.3	58.5
	1994— December	178.2	20.5	198.7	150.2	10.3	56.9
	1995— January	179.9	27.2	207.1	149.2	13.1	58.1
	February	176.9	25.6	202.5	152.5	12.7	57.0
ILLAWARRA AND SOUTH EASTERN (SRs)							
MALES	1994— February	135.9	19.0	154.9	62.2	12.2	71.3
	1994— December	136.6	14.9	151.5	61.4	9.8	71.2
	1995— January	139.0	16.5	155.4	65.1	10.6	70.5
	February	144.4	18.7	163.0	57.4	11.5	74.0
FEMALES	1994— February	93.1	14.3	107.3	112.1	13.3	48.9
	1994— December	99.4	13.5	112.9	108.8	12.0	50.9
	1995— January	95.8	10.9	106.7	113.8	10.2	48.4
	February	93.6	14.4	108.0	116.0	13.4	48.2
PERSONS	1994— February	229.0	33.2	262.2	174.3	12.7	60.1
	1994— December	236.0	28.4	264.4	170.2	10.7	60.8
	1995— January	234.7	27.4	262.1	178.9	10.5	59.4
	February	238.0	33.1	271.1	173.4	12.2	61.0
ILLAWARRA (SR)							
MALES	1994— February	89.1	15.6	104.7	44.2	14.9	70.3
	1994— December	89.6	11.6	101.1	40.2	11.4	71.6
	1995— January	91.7	12.1	103.8	42.9	11.7	70.8
	February	96.1	13.0	109.0	37.5	11.9	74.4
FEMALES	1994— February	61.2	10.8	72.0	80.4	15.0	47.2
	1994— December	60.8	10.1	70.9	80.0	14.2	47.0
	1995— January	60.1	8.2	68.3	82.0	12.0	45.4
	February	59.2	10.6	69.8	84.4	15.3	45.3
PERSONS	1994— February	150.2	26.4	176.7	124.6	15.0	58.6
	1994— December	150.4	21.7	172.1	120.2	12.6	58.9
	1995— January	151.8	20.3	172.1	124.9	11.8	57.9
	February	155.2	23.6	178.8	121.9	13.2	59.5

TABLE 18. LABOUR FORCE STATUS (a), REGIONS OF NSW—continued

<i>Month</i>		<i>Employed</i> (<i>'000</i>)	<i>Unemployed</i> (<i>'000</i>)	<i>Labour</i> <i>force</i> (<i>'000</i>)	<i>Not in</i> <i>labour</i> <i>force</i> (<i>'000</i>)	<i>Unemp-</i> <i>loyment</i> <i>rate</i> (<i>per cent</i>)	<i>Partici-</i> <i>pation</i> <i>rate</i> (<i>per cent</i>)
WOLLONGONG (SRs)							
MALES	1994— February	66.1	12.4	78.5	26.8	15.8	74.5
	1994— December	65.4	7.4	72.8	26.1	10.1	73.6
	1995— January	68.8	8.3	77.1	27.1	10.8	74.0
	February	72.5	8.7	81.2	25.8	10.7	75.9
	1994— February	43.5	8.3	51.8	57.2	15.9	47.5
FEMALES	1994— December	43.3	8.1	51.4	56.2	15.8	47.8
	1995— January	44.9	6.1	51.0	56.9	11.9	47.3
	February	43.8	8.0	51.8	57.9	15.5	47.2
	1994— February	109.6	20.7	130.3	84.0	15.9	60.8
	1994— December	108.7	15.5	124.2	82.3	12.5	60.1
PERSONS	1995— January	113.7	14.4	128.1	84.0	11.2	60.4
	February	116.3	16.7	133.0	83.7	12.6	61.4
RICHMOND-TWEED AND MID-NORTH COAST (SRs)							
MALES	1994— February	81.2	20.0	101.1	51.2	19.7	66.4
	1994— December	97.5	15.1	112.7	57.7	13.4	66.1
	1995— January	92.1	15.9	107.9	58.7	14.7	64.8
	February	98.2	13.0	111.1	56.3	11.7	66.4
	1994— February	59.2	10.7	69.9	93.3	15.3	42.8
FEMALES	1994— December	71.6	9.1	80.7	97.0	11.3	45.4
	1995— January	66.7	8.3	75.0	97.5	11.0	43.5
	February	75.2	10.6	85.8	92.8	12.4	48.0
	1994— February	140.4	30.6	171.0	144.5	17.9	54.2
	1994— December	169.1	24.3	193.4	154.7	12.6	55.6
PERSONS	1995— January	158.8	24.1	182.9	156.2	13.2	53.9
	February	173.4	23.6	197.0	149.1	12.0	56.9
NORTHERN, FAR WEST-NORTH WESTERN AND CENTRAL WEST (SRs) (c)							
MALES	1994— February	111.4	12.0	123.3	57.0	9.7	68.4
	1994— December	122.3	10.4	132.7	50.2	7.9	72.5
	1995— January	121.7	10.4	132.1	49.6	7.9	72.7
	February	120.0	11.7	131.6	49.4	8.9	72.7
	1994— February	72.3	8.7	81.0	95.7	10.8	45.8
FEMALES	1994— December	95.7	8.1	103.8	95.0	7.8	52.2
	1995— January	89.8	7.6	97.4	102.6	7.8	48.7
	February	86.3	8.3	94.6	95.2	8.8	49.8
	1994— February	183.6	20.7	204.3	152.7	10.1	57.2
	1994— December	218.0	18.5	236.6	145.3	7.8	62.0
PERSONS	1995— January	211.5	18.0	229.5	152.2	7.9	60.1
	February	206.3	19.9	226.2	144.6	8.8	61.0

TABLE 18. LABOUR FORCE STATUS (a), REGIONS OF NSW—continued

		<i>Employed</i> (<i>'000</i>)	<i>Unemployed</i> (<i>'000</i>)	<i>Labour</i> <i>force</i> (<i>'000</i>)	<i>Not in</i> <i>labour</i> <i>force</i> (<i>'000</i>)	<i>Unemp-</i> <i>loyment</i> <i>rate</i> (<i>per cent</i>)	<i>Partici-</i> <i>pation</i> <i>rate</i> (<i>per cent</i>)
<i>Month</i>							
MURRAY-MURRUMBIDGEE (SR)							
MALES	1994— February	58.0	6.3	64.3	26.7	9.8	70.7
	1994— December	61.4	* 4.4	65.7	24.3	* 6.6	73.1
	1995— January	59.2	5.9	65.1	25.6	9.1	71.8
	February	60.9	5.1	66.0	24.5	7.7	72.9
FEMALES	1994— February	35.5	* 4.2	39.7	52.3	* 10.5	43.1
	1994— December	46.6	* 3.8	50.4	43.7	* 7.6	53.6
	1995— January	44.5	* 4.3	48.8	48.4	* 8.8	50.2
	February	49.2	* 4.0	53.3	45.5	* 7.6	54.0
PERSONS	1994— February	93.5	10.4	104.0	79.0	10.0	56.8
	1994— December	107.9	8.2	116.1	67.9	7.1	63.1
	1995— January	103.7	10.2	113.9	74.0	9.0	60.6
	February	110.1	9.1	119.2	70.0	7.7	63.0

(a) While the Labour Force Survey is designed primarily to produce reliable estimates at the national and State/Territory level, it also delivers estimates for a number of regions within States. As with national and State estimates, regional labour force estimates are subject to sampling error. Since estimates for regions are components of corresponding estimates at the State level — and are thus based on a considerably smaller sample size — they are subject to higher relative standard error. Care should therefore be taken in interpretation of regional estimates, particularly month to month movements. Tables of standard errors are included in the Technical Note on pages 43–47 of this publication. (b) Previously Manly-Warringah (SR). (c) Excludes components of Far West (SD). These are published as part of Balance of NSW (MSR).

**TABLE 19. EMPLOYED PERSONS: INDUSTRY (a) AND OCCUPATION
SYDNEY (MSR) AND BALANCE OF NSW (MSR), FEBRUARY 1995
(^{'000})**

<i>Industry division and Major occupation group</i>	<i>Males</i>	<i>Females</i>	<i>Persons</i>
SYDNEY (MSR)			
Industry—			
Agriculture, forestry and fishing	7.8	6.6	14.3
Mining	*4.9	*0.4	*5.2
Manufacturing	178.5	79.5	258.0
Electricity, gas and water supply	16.6	*2.6	19.2
Construction	102.5	12.6	115.1
Wholesale trade	97.9	43.6	141.5
Retail trade	130.7	112.3	242.9
Accommodation, cafes and restaurants	42.2	38.8	81.0
Transport and storage	71.4	23.8	95.2
Communication services	27.9	11.0	38.9
Finance and insurance	42.3	50.9	93.2
Property and business services	109.9	93.6	203.5
Government administration and defence	38.6	27.4	66.0
Education	39.4	62.9	102.3
Health and community services	37.3	123.7	161.0
Cultural and recreational services	29.6	29.5	59.1
Personal and other services	31.9	30.3	62.1
Occupation—			
Managers and administrators	118.7	42.9	161.7
Professionals	170.3	122.0	292.3
Para-professionals	47.1	45.8	93.0
Tradespersons	221.4	23.5	244.8
Clerks	87.4	240.3	327.7
Salespersons and personal service workers	114.6	178.2	292.8
Plant and machine operators, and drivers	84.2	14.3	98.5
Labourers and related workers	165.6	82.3	247.9
Total employed	1,009.2	749.3	1,758.5
BALANCE OF NSW (MSR)			
Industry—			
Agriculture, forestry and fishing	72.7	32.7	105.4
Mining	17.7	*0.6	18.2
Manufacturing	90.8	25.6	116.3
Electricity, gas and water supply	13.4	*2.0	15.4
Construction	59.7	11.5	71.2
Wholesale trade	32.5	13.0	45.5
Retail trade	74.3	75.7	149.9
Accommodation, cafes and restaurants	23.9	32.5	56.4
Transport and storage	31.9	5.8	37.7
Communication services	12.2	*4.7	16.9
Finance and insurance	*4.8	15.0	19.8
Property and business services	33.3	28.2	61.5
Government administration and defence	25.2	11.4	36.5
Education	21.9	43.3	65.2
Health and community services	17.1	59.9	76.9
Cultural and recreational services	5.5	5.3	10.8
Personal and other services	18.4	19.1	37.5
Occupation—			
Managers and administrators	94.4	24.3	118.7
Professionals	52.4	41.6	94.0
Para-professionals	28.0	28.1	56.1
Tradespersons	125.7	15.2	140.9
Clerks	25.8	109.1	134.9
Salespersons and personal service workers	46.7	102.2	148.9
Plant and machine operators, and drivers	63.5	6.9	70.4
Labourers and related workers	118.9	58.5	177.4
Total employed	555.2	386.0	941.2

(a) Industry data are now classified according to the Australian and New Zealand Standard Industrial Classification. See the Explanatory Notes for more details.

TABLE 20. LABOUR FORCE STATUS: ORIGINAL SERIES, ACT

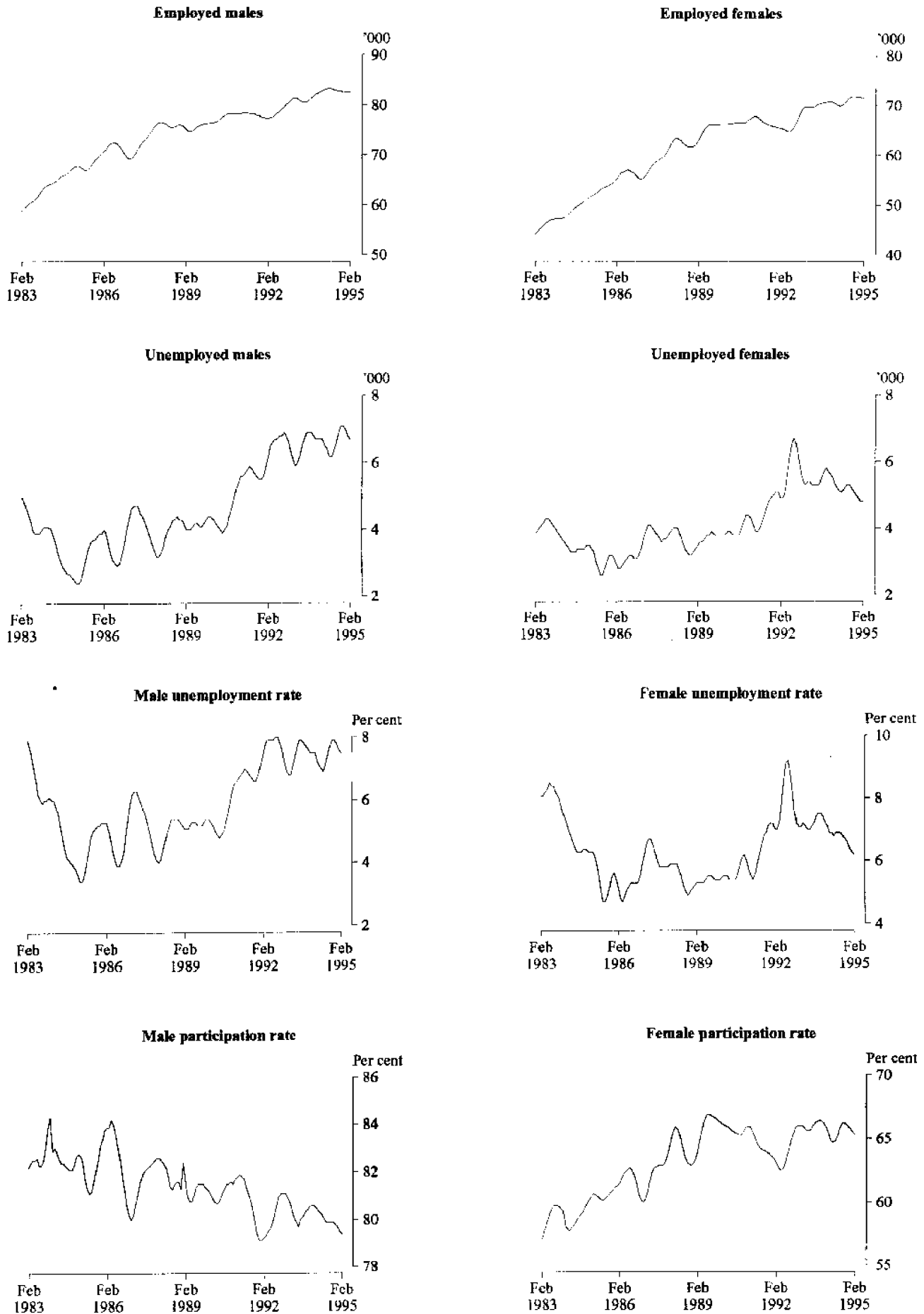
Month	Employed		Unemployed				Labour force (<i>'000</i>)	Not in labour force (<i>'000</i>)	Civilian population aged 15 and over (<i>'000</i>)	Unemployment rate (per cent)	Participation rate (per cent)
	Full-time workers (<i>'000</i>)	Part-time workers (<i>'000</i>)	Total (<i>'000</i>)	Looking for full-time work (<i>'000</i>)	Looking for part-time work (<i>'000</i>)	Total (<i>'000</i>)					
MALES											
February—											
1991	70.6	7.5	78.1	4.8	* 1.3	6.1	84.2	18.1	102.4	7.3	82.3
1992	68.1	8.9	77.0	6.0	* 1.3	7.2	84.3	21.2	105.4	8.6	79.9
1993	72.1	9.0	81.1	6.1	1.0	7.1	88.2	19.9	108.1	8.0	81.6
1993—											
December	73.4	9.9	83.3	5.4	1.2	6.6	89.9	20.6	110.5	7.4	81.4
1994—											
January	71.9	9.4	81.3	6.8	1.6	8.4	89.7	21.1	110.8	9.3	80.9
February	74.1	9.1	83.3	6.7	1.8	8.6	91.8	19.3	111.1	9.3	82.7
November	72.9	10.9	83.8	4.5	1.4	5.9	89.7	22.7	112.4	6.6	79.8
December	73.6	10.0	83.6	6.5	1.3	7.8	91.4	21.1	112.5	8.6	81.2
1995—											
January	72.3	8.7	81.0	5.9	1.4	7.3	88.4	24.1	112.5	8.3	78.6
February	72.5	10.4	82.9	5.9	1.5	7.4	90.3	22.2	112.5	8.2	80.3
MARRIED FEMALES											
February—											
1991	27.2	13.0	40.2	* 1.2	* 0.7	1.9	42.1	20.5	62.5	4.5	67.3
1992	26.0	14.4	40.4	1.6	* 0.8	2.5	42.8	22.9	65.7	5.8	65.2
1993	26.5	13.5	40.0	1.8	* 0.5	2.2	42.2	20.5	62.7	5.3	67.3
1993—											
December	24.2	17.1	41.3	* 0.9	* 0.4	1.3	42.7	21.2	63.9	3.1	66.8
1994—											
January	24.7	14.8	39.5	* 0.9	* 0.5	1.4	40.9	22.4	63.3	3.4	64.6
February	24.6	14.7	39.4	1.2	* 0.8	2.0	41.4	22.7	64.1	4.9	64.6
November	27.5	15.7	43.1	* 0.8	* 0.6	1.4	44.5	20.0	64.5	3.1	69.0
December	25.9	15.2	41.0	1.1	* 0.4	1.5	42.6	21.2	63.8	3.6	66.7
1995—											
January	22.3	14.7	37.0	1.2	* 0.8	2.1	39.0	24.6	63.6	5.3	61.4
February	24.9	15.1	40.0	1.4	1.3	2.8	42.8	21.6	64.4	6.4	66.4
ALL FEMALES											
February—											
1991	47.5	19.6	67.1	3.4	2.5	5.9	73.0	36.1	109.0	8.0	66.9
1992	43.2	22.7	65.9	4.0	2.1	6.1	72.0	39.7	111.7	8.5	64.4
1993	45.5	22.9	68.4	5.0	2.5	7.5	75.9	38.0	113.9	9.9	66.6
1993—											
December	43.8	28.4	72.3	3.8	1.6	5.4	77.6	37.9	115.6	6.9	67.2
1994—											
January	45.2	24.5	69.7	4.9	1.6	6.5	76.1	39.6	115.7	8.5	65.8
February	44.4	25.2	69.6	5.1	2.4	7.6	77.2	38.7	115.9	9.8	66.6
November	46.6	26.6	73.2	2.3	1.7	4.0	77.2	39.4	116.6	5.2	66.2
December	47.0	26.6	73.6	2.8	1.6	4.4	78.0	38.7	116.6	5.6	66.8
1995—											
January	43.9	24.6	68.5	3.2	2.3	5.5	74.0	42.7	116.7	7.4	63.4
February	45.3	25.8	71.1	3.5	3.2	6.8	77.9	38.9	116.8	8.7	66.7
PERSONS											
February—											
1991	118.1	27.1	145.2	8.2	3.8	12.0	157.2	54.2	211.4	7.6	74.4
1992	111.2	31.7	142.9	9.9	3.4	13.3	156.2	60.9	217.1	8.5	72.0
1993	117.6	31.9	149.5	11.1	3.4	14.6	164.1	57.9	222.0	8.9	73.9
1993—											
December	117.3	38.3	155.6	9.2	2.9	12.0	167.6	58.5	226.1	7.2	74.1
1994—											
January	117.1	33.9	151.0	11.7	3.1	14.8	165.8	60.7	226.5	8.9	73.2
February	118.5	34.4	152.9	11.9	4.3	16.1	169.0	58.0	227.0	9.5	74.5
November	119.4	37.6	157.0	6.8	3.1	9.9	166.9	62.1	229.0	5.9	72.9
December	120.6	36.6	157.2	9.3	2.9	12.2	169.4	59.8	229.2	7.2	73.9
1995—											
January	116.2	33.3	149.5	9.1	3.7	12.9	162.4	66.9	229.2	7.9	70.8
February	117.9	36.2	154.1	9.4	4.7	14.1	168.2	61.1	229.3	8.4	73.3

TABLE 21. LABOUR FORCE STATUS: TREND SERIES, ACT (a)

Month	Employed (^{'000})	Unemployed (^{'000})	Labour force (^{'000})	Unemployment rate (per cent)	Participation rate (per cent)
MALES					
February—					
1991	78.2	5.6	83.8	6.6	81.8
1992	77.3	6.2	83.5	7.4	79.2
1993	81.4	5.9	87.3	6.8	80.7
1993—					
December	82.3	6.7	89.1	7.5	80.6
1994—					
January	82.6	6.7	89.3	7.5	80.6
February	82.8	6.7	89.5	7.5	80.5
March	83.0	6.5	89.6	7.3	80.4
April	83.2	6.4	89.6	7.1	80.3
May	83.3	6.2	89.5	7.0	80.2
June	83.2	6.2	89.4	6.9	80.0
July	83.0	6.4	89.4	7.1	79.9
August	82.9	6.6	89.5	7.4	79.9
September	82.8	6.9	89.7	7.7	79.9
October	82.7	7.0	89.8	7.9	79.9
November	82.7	7.1	89.8	7.9	79.8
December	82.7	7.0	89.7	7.8	79.7
1995—					
January	82.7	6.8	89.5	7.6	79.5
February	82.6	6.7	89.3	7.5	79.4
FEMALES					
February—					
1991	67.7	4.1	71.8	5.7	65.9
1992	65.4	4.9	70.3	7.0	63.0
1993	69.7	5.4	75.1	7.1	66.0
1993—					
December	70.8	5.6	76.4	7.4	66.1
1994—					
January	70.6	5.5	76.1	7.2	65.8
February	70.3	5.3	75.7	7.1	65.3
March	70.0	5.2	75.3	6.9	64.8
April	69.9	5.1	75.1	6.9	64.7
May	70.1	5.1	75.2	6.8	64.8
June	70.5	5.2	75.7	6.9	65.2
July	71.1	5.3	76.3	6.9	65.7
August	71.6	5.3	76.9	6.9	66.1
September	71.8	5.2	77.0	6.8	66.2
October	71.9	5.1	77.0	6.7	66.1
November	71.8	5.0	76.8	6.6	65.9
December	71.7	4.9	76.6	6.4	65.7
1995—					
January	71.6	4.8	76.4	6.3	65.5
February	71.5	4.8	76.2	6.2	65.3
PERSONS					
February—					
1991	146.0	9.6	155.6	6.2	73.6
1992	142.7	11.2	153.8	7.3	70.9
1993	151.1	11.3	162.4	6.9	73.1
1993—					
December	153.1	12.4	165.5	7.5	73.2
1994—					
January	153.2	12.2	165.4	7.4	73.0
February	153.1	12.0	165.1	7.3	72.7
March	153.1	11.8	164.8	7.1	72.5
April	153.2	11.5	164.7	7.0	72.3
May	153.4	11.4	164.7	6.9	72.3
June	153.7	11.4	165.1	6.9	72.4
July	154.1	11.6	165.7	7.0	72.6
August	154.5	11.9	166.4	7.2	72.8
September	154.6	12.1	166.7	7.3	72.9
October	154.6	12.2	166.7	7.3	72.9
November	154.5	12.1	166.6	7.3	72.7
December	154.3	11.9	166.3	7.2	72.5
1995—					
January	154.2	11.7	165.9	7.0	72.4
February	154.1	11.4	165.5	6.9	72.2

(a) See Explanatory Note 28.

TREND SERIES, ACT (a)



(a) Comparisons between these graphs should not be made, as their vertical axes are not similarly scaled.

TABLE 22. LABOUR FORCE STATUS: AGE, ACT, FEBRUARY 1995

	Persons						
	Females			Age group (years)			Total
	Males	Married	Total	15-19	20-24	25 and over	
	— '000 —						
<i>Employed</i>	82.9	40.0	71.1	11.7	23.6	118.8	154.1
Full-time workers	72.5	24.9	45.3	3.7	18.3	95.9	117.9
Part-time workers	10.4	15.1	25.8	8.1	5.3	22.8	36.2
<i>Unemployed</i>	7.4	2.8	6.8	3.8	3.2	7.2	14.1
Looking for full-time work	5.9	1.4	3.5	1.8	2.5	5.2	9.4
Looking for part-time work	1.5	1.3	3.2	2.0	* 0.7	2.0	4.7
<i>Labour force</i>	90.3	42.8	77.9	15.5	26.7	125.9	168.2
Not in labour force	22.2	21.6	38.9	8.4	3.7	49.1	61.1
Aged 15-19 attending school	3.7	* 0.1	3.1	6.8	6.8
<i>Civilian population</i>	112.5	64.4	116.8	23.9	30.4	175.0	229.3
	— per cent —						
Unemployment rate	8.2	6.4	8.7	24.4	11.9	5.7	8.4
Looking for full-time work	7.5	5.4	7.2	32.4	11.9	5.1	7.4
Participation rate	80.3	66.4	66.7	65.0	87.9	71.9	73.3
Employment/population ratio	73.7	62.1	60.9	49.2	77.4	67.9	67.2
	— number —						
Average weekly hours worked by employed persons	39.0	29.2	29.3	20.5	33.2	36.1	34.5
Average duration of unemployment (weeks)	42.9	21.2	17.9	14.3	33.4	38.7	31.0

TABLE 23. NON-INSTITUTIONALISED PERSONS (a): LABOUR FORCE STATUS, BIRTHPLACE AND YEAR OF ARRIVAL, ACT, FEBRUARY 1995
(^{'000})

	Employed	Unemployed	Not in labour force	Labour force	Civilian population aged 15 and over
<i>Born in Australia</i>	115.0	9.6	40.6	124.6	165.2
<i>Born outside Australia</i>	39.0	4.5	18.6	43.6	62.2
Arrived before 1966	11.2	* 0.7	8.3	11.9	20.2
Arrived 1966-1970	6.0	* 0.5	2.7	6.6	9.2
Arrived 1971-1975	6.1	* 0.3	1.1	6.4	7.5
Arrived 1976-1980	4.2	* 0.4	1.5	4.6	6.1
Arrived 1981-1985	4.4	* 0.7	1.2	5.1	6.3
Arrived 1986-1990	4.2	* 0.9	1.2	5.1	6.3
Arrived 1991 to survey date	2.8	1.2	2.5	4.0	6.4
<i>Main English speaking countries</i>	18.2	1.3	6.8	19.5	26.3
Arrived before 1966	5.0	* 0.3	3.1	5.3	8.4
Arrived 1966-1970	2.9	* 0.4	1.2	3.3	4.5
Arrived 1971-1975	3.0	* 0.0	* 0.4	3.0	3.4
Arrived 1976-1980	1.9	* 0.3	* 0.8	2.2	3.0
Arrived 1981-1985	2.1	* 0.1	* 0.5	2.2	2.7
Arrived 1986-1990	1.7	* 0.0	* 0.1	1.7	1.8
Arrived 1991 to survey date	1.7	* 0.2	* 0.6	1.9	2.6
<i>Other than Main English speaking countries</i>	20.8	3.3	11.8	24.1	35.8
Arrived before 1966	6.2	* 0.3	5.3	6.6	11.8
Arrived 1966-1970	3.1	* 0.2	1.4	3.3	4.7
Arrived 1971-1975	3.1	* 0.3	* 0.7	3.4	4.2
Arrived 1976-1980	2.3	* 0.1	* 0.7	2.4	3.2
Arrived 1981-1985	2.4	* 0.6	* 0.7	2.9	3.6
Arrived 1986-1990	2.5	* 0.9	1.1	3.4	4.5
Arrived 1991 to survey date	1.1	1.0	1.8	2.1	3.9
Total	154.1	14.1	59.2	168.2	227.4

(a) Excludes boarding school pupils.

TABLE 24. EMPLOYED PERSONS: INDUSTRY (a) AND OCCUPATION, ACT, FEBRUARY 1995
(^{'000})

Industry division and Major occupation group	Males	Females	Persons
Industry—			
Agriculture, forestry, fishing	1.5	*0.4	1.9
Mining	*0.0	*0.0	*0.0
Manufacturing	3.7	1.7	5.4
Electricity, gas and water supply	*0.8	*0.1	*0.9
Construction	9.1	1.7	10.8
Wholesale trade	3.7	1.3	5.0
Retail trade	10.4	10.0	20.4
Accommodation, cafes and restaurants	4.0	4.4	8.4
Transport and storage	3.8	1.4	5.2
Communication services	1.5	*1.0	2.5
Finance and insurance	1.5	1.4	2.9
Property and business services	10.9	7.4	18.2
Government administration and defence	19.2	17.4	36.6
Education	3.9	6.4	10.3
Health and community services	2.7	10.5	13.2
Cultural and recreational services	3.6	2.3	5.9
Personal and other services	2.8	3.6	6.4
Occupation—			
Managers and administrators	14.5	4.9	19.3
Professionals	17.1	10.2	27.4
Para-professionals	4.6	4.5	9.0
Tradespersons	13.4	1.7	15.1
Clerks	11.0	27.7	38.7
Salespersons and personal service workers	7.5	17.0	24.5
Plant and machinery operators, and drivers	6.0	*0.7	6.7
Labourers and related workers	8.9	4.5	13.4
Total employed	82.9	71.1	154.1

(a) Industry data are now classified according to the Australian and New Zealand Standard Industrial Classification. See the Explanatory Notes for more details.

EMPLOYMENT BY INDUSTRY DIVISION, ACT, FEBRUARY 1995

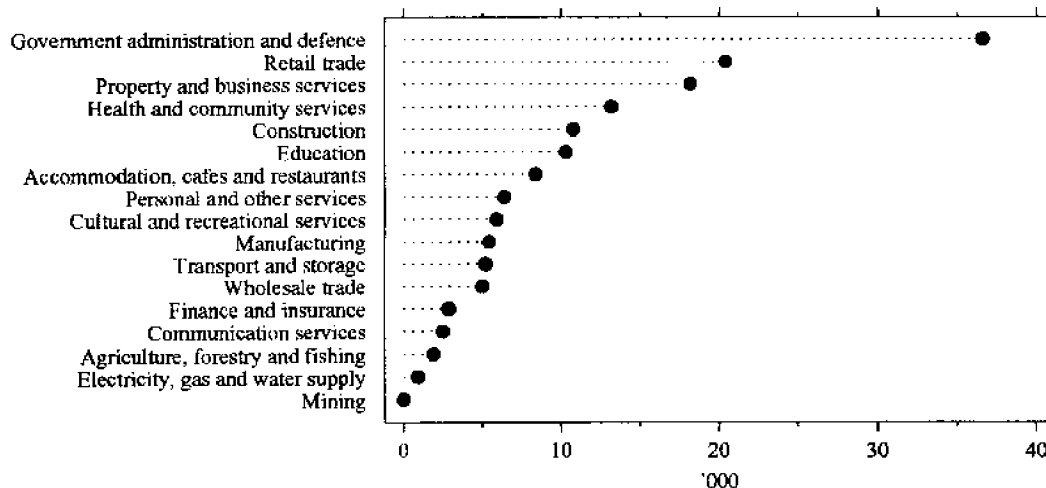
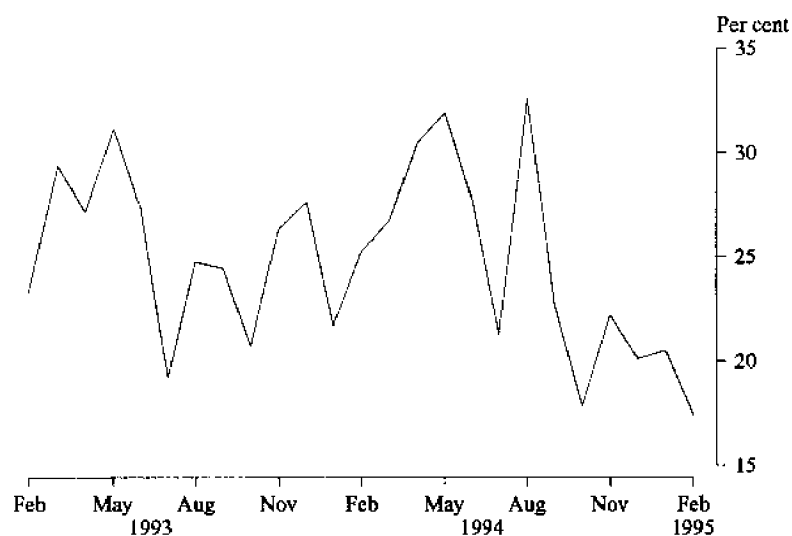


TABLE 25. LONG-TERM UNEMPLOYMENT, ACT

Month	Long-term unemployment									Long-term unemployment as a proportion of total unemployment		
	52 weeks and under 104			104 weeks and over			Total			Males (per cent)	Females (per cent)	Persons (per cent)
	Males ('000)	Females ('000)	Persons ('000)	Males ('000)	Females ('000)	Persons ('000)	Males ('000)	Females ('000)	Persons ('000)			
1993 --												
December	* 0.6	* 0.6	* 1.2	1.5	* 0.6	2.1	2.1	1.2	3.3	31.7	22.5	27.6
1994 --												
January	* 0.5	* 0.5	* 1.2	1.6	* 0.5	2.1	2.1	1.1	3.2	25.0	17.4	21.7
February	* 0.7	1.1	* 1.8	1.2	1.1	2.3	2.0	2.1	4.1	22.8	27.8	25.2
March	* 0.9	* 0.6	* 1.7	* 0.8	* 0.6	1.4	1.7	1.4	3.1	26.5	26.9	26.7
April	* 0.9	* 0.8	* 1.7	1.3	* 0.6	1.9	2.2	1.4	3.6	33.9	26.2	30.4
May	* 1.0	* 0.6	* 1.5	1.5	* 0.5	2.0	2.4	1.0	3.5	41.1	20.9	31.9
June	* 0.8	* 0.6	* 1.5	1.3	* 0.2	1.4	2.1	* 0.8	2.9	34.3	18.5	27.7
July	* 0.5	* 0.4	* 0.9	1.0	* 0.4	1.4	1.5	* 0.7	2.2	26.3	15.4	21.3
August	* 0.9	* 0.5	* 1.4	1.5	* 0.6	2.1	2.4	1.1	3.4	41.1	22.3	32.6
September	* 0.8	* 0.2	* 1.1	1.3	* 0.3	1.6	2.1	* 0.6	2.7	30.7	11.4	22.7
October	* 1.0	* 0.3	* 1.3	* 0.6	* 0.3	1.0	1.7	* 0.6	2.2	23.4	10.5	17.8
November	* 0.5	* 0.7	* 1.2	* 0.7	* 0.3	1.0	1.2	1.0	2.2	20.1	25.1	22.2
December	* 0.6	* 0.3	* 0.9	1.1	* 0.4	1.5	1.7	* 0.7	2.5	22.0	16.7	20.1
1995 --												
January	* 0.9	* 0.3	* 1.3	* 0.9	* 0.4	1.4	1.9	* 0.8	2.6	25.4	14.0	20.5
February	* 1.0	* 0.3	* 1.4	* 0.9	* 0.2	1.1	1.9	* 0.6	2.5	25.6	8.4	17.4

LONG TERM UNEMPLOYED AS A PROPORTION OF
TOTAL UNEMPLOYED, ACT

LABOUR FORCE SUPPLEMENTARY TOPICS

Although emphasis in the population survey is placed on the regular collection of data on demographic and labour force characteristics, supplementary and special surveys of particular aspects of the labour force are carried out from time to time.

From December 1994, the principal results from labour force supplementary surveys will be released in *The Labour Force, Australia* (6203.0). At the same time, the Standard Data Service for a supplementary survey will be available, including tables formerly included in the supplementary publications. Equivalent tables at the State level will still be available on microfiche. In addition, other unpublished data can be provided to meet special requirements.

Catalogue / Product no.	Title of Publication / Standard Data Service	Price (a) \$
6206.0	Labour Force Experience, Australia, March 1994	13.00
6209.0	Labour Mobility, Australia, February 1994	13.00
6216.0.40.001*	Multiple Jobholding, Australia, August 1994	17.50
6220.0.40.001*	Persons Not in the Labour Force, Australia, September 1994	17.50
6222.0	Job Search Experience of Unemployed Persons, Australia, July 1994	13.00
6224.0	Labour Force Status and Other Characteristics of Families, Australia, June 1994	13.00
6227.0	Transition from Education to Work, Australia, May 1994	18.00
6235.0	Labour Force Status and Educational Attainment, Australia, February 1994	13.00
6238.0	Retirement and Retirement Intentions, Australia, October 1992	12.70
6243.0	Career Paths of Persons with Trade Qualifications, Australia, 1993	18.00
6245.0	Successful and Unsuccessful Job Search Experience, Australia, July 1994	13.00
6250.0	Labour Force Status and Other Characteristics of Migrants, Australia, September 1993	13.00
6254.0	Career Experience, Australia, February 1993	12.70
6264.0	Persons who had re-entered the Labour Force, Australia, May 1993	12.70
6265.0.40.001*	Underemployed Workers, Australia, September 1994	17.50
6267.0	Persons Who Have Left the Labour Force, Australia, April 1991	11.50
6272.0	Participation in Education, Australia, September 1993	13.00
6275.0	Persons Employed at Home Australia, March 1992	12.50
6277.0	Career Paths of Qualified Nurses, Australia, March to July 1989	12.50
6278.0	Training and Education Experience, Australia, 1993	30.00
6310.0.40.001*	Weekly Earnings of Employees (Distribution), Australia, August 1994	17.50
6317.0	Annual and Long Service Leave Taken, Australia, May 1988 to April 1989	11.50
6319.0	Superannuation, Australia, November 1993	13.00
6325.0.40.001*	Trade Union Members, Australia, August 1994	17.50
6334.0.40.001*	Employment Benefits, Australia, August 1994	17.50
6342.0	Working Arrangements, Australia, August 1993	13.00

(a) Prices quoted are subject to revision.

* Standard Data Service

Recent issues of *The Labour Force, Australia* contain the principal results of the following supplementary surveys:

December 1994 issue

- Trade Union Members, Australia, August 1994
- Weekly Earnings of Employees (Distribution), Australia, August 1994

January 1995 issue

- Employment Benefits, Australia, August 1994

February 1995 issue

- Multiple Jobholding, Australia, August 1994
- Persons Not in the Labour Force, Australia, September 1994
- Underemployed Workers, Australia, September 1994

EXPLANATORY NOTES

Introduction

This publication contains estimates of the civilian labour force derived from the labour force survey component of the monthly population survey, which is conducted on a sample basis throughout Australia.

The population survey

2. This survey consists of the labour force survey (LFS) and, in most months, one or more supplementary topics. The survey is based on a multi-stage area sample of private dwellings (houses, flats, etc.) and non-private dwellings (hotels, motels, etc.) and covers slightly less than one-half of one per cent of the population of New South Wales. The information is obtained from the occupants of selected dwellings by carefully chosen and specially trained interviewers. The interviews are generally conducted during the two weeks beginning on the Monday between the 6th and 12th of each month. The information obtained relates to the week before the interview (i.e. the reference week).

Scope

3. The labour force survey includes all persons aged 15 years and over, except:

- (a) members of the permanent defence forces;
- (b) certain diplomatic personnel of overseas governments, customarily excluded from census and estimated populations;
- (c) overseas residents in Australia; and
- (d) members of non-Australian defence forces (and their dependants) stationed in Australia.

Survey sample redesign

4. Following each Population Census, the ABS redesigns and reselects the LFS to take into account the new information which is obtained from the Census. The sample used in the LFS from September 1987 to August 1992, which was designed and selected using data from the 1986 Census, has been updated and reselected using information collected in the 1991 Census. The new sample was phased in over the period September 1992 to December 1992.

5. For the most part, one quarter of the new sample was introduced each month so that, by December 1992, the entire new sample was in place.

Potential effects on labour force survey estimates

6. Implications for estimates produced from the LFS due to sample redesign and its implementation are as follows.

- (a) The sampling error overall increased initially by about seven per cent over the previous level but will decline gradually during the life of the new sample. For State estimates, the initial increase

was about 8 per cent, while for the Territories, there was a decrease of 19 per cent. There were also higher standard errors for movements produced over the period September 1992 to December 1992 compared with those for the corresponding series produced prior to this period and from January 1993 onwards. Overall, these were estimated to be up to 20 per cent higher than the normal standard errors on monthly movements.

- (b) Analysis has shown that the unemployment rate is marginally higher (less than 0.5 percentage points on average) for those persons in sample for the first time. Normally, this will not affect the overall estimates of month-to-month movements because the number of persons in the sample does not change significantly. However, during the transition period, there were twice as many people as usual in the sample for the first time. This may have caused a small upward movement (of less than 0.1 percentage points on average) in the unemployment rate from August 1992 to September 1992 and a compensating decrease from December 1992 to January 1993.

7. For further information, see *Information Paper: Labour Force Survey Sample Design* (6269.0).

Definitions

8. The labour force category to which a person is assigned depends on the actual activity undertaken during the reference week (i.e. whether working, looking for work, etc.). The following definitions, which conform closely to the international standard definitions specified by the International Labour Office (ILO), relate only to those persons within the scope of the survey.

9. *Employed persons* comprise all civilians aged 15 years and over who, during the reference week:

- (a) worked for one hour or more for pay, profit, commission or payment in kind (including employees, employers and self-employed persons) in a job or business, or on a farm; or
- (b) worked for one hour or more without pay in a family business or on a farm (i.e. unpaid family helpers); or
- (c) were employees who had a job but were not at work and were: on paid leave; on leave without pay for less than four weeks up to the end of the reference week; stood down without pay because of bad weather or plant breakdown at their place of employment for less than four weeks up to the end of the reference week; on strike or locked out; on workers' compensation and expected to be returning to their job; or receiving wages or salary while undertaking full-time study; or

- (d) were employers, self-employed persons or unpaid family helpers who had a job, business or farm, but were not at work.
10. Prior to April 1986, unpaid family helpers who worked for 1 to 14 hours were excluded from the category of employed persons.
11. Employed persons can be classified into:
- (a) *full-time workers* (i.e. those who usually worked 35 hours or more a week (in all jobs) and others who, although usually part-time workers, worked 35 hours or more during the reference week); and
 - (b) *part-time workers* (i.e. those who usually worked less than 35 hours a week and who did so during the reference week).
12. *Unemployed persons* are all those aged 15 years and over who were not employed during the reference week, and:
- (a) had actively looked for full-time or part-time work at any time in the four weeks up to the end of the reference week, and:
 - (i) were available for work in the reference week, or would have been available except for temporary illness (i.e. lasting for less than four weeks to the end of the reference week); or
 - (ii) were waiting to start a new job within four weeks from the end of the reference week and would have started in the reference week if the job had been available then; or
 - (b) were waiting to be called back to a full-time or part-time job from which they had been stood down without pay for less than four weeks up to the end of the reference week (including the whole of the reference week) for reasons other than bad weather or plant breakdown.
13. *Actively looking for work* includes writing, telephoning or applying in person to an employer for work; answering a newspaper advertisement for a job; checking factory or Commonwealth Employment Service notice-boards; being registered with the Commonwealth Employment Service; checking or registering with any other employment agency; advertising or tendering for work; and contacting friends or relatives.
14. *The unemployment rate* for any group is the number unemployed expressed as a percentage of the labour force (i.e. employed plus unemployed) in the same group.
15. The *labour force* comprises all persons who, during the reference week, were employed or unemployed as defined above.
16. *Long term unemployed* comprises persons unemployed for a period of 52 weeks or more.
17. *Persons not in the labour force* are those who, during the reference week, were not in the categories *employed* or *unemployed* as defined above.
18. *The labour force participation rate* for any group is the labour force expressed as a percentage of the civilian population aged 15 years and over in the same group.
19. *Duration of unemployment* is the period from the time the person began looking for work or was stood down to the end of the reference week.
20. *Unemployed persons classified by industry and occupation*. Unemployed persons who had worked full-time for two weeks or more in the last two years are classified according to the industry and occupation of their most recent full-time job.
21. *Industry classification*. From August 1994, Labour Force Survey industry data are classified according to the Australian and New Zealand Standard Industrial Classification (ANZSIC), a detailed description of which appears in *ANZSIC 1993* (1292.0). For further information about the application of ANZSIC to Labour Force Survey data, see *Information Paper Labour Force Survey: Introduction of ANZSIC for industry data* (6259.0).
22. *Occupation classification*. Occupation data are presented in accordance with the *Australian Standard Classification of Occupations (ASCO)* (1221.0 and 1222.0).
23. *Marital status*. In the labour force survey, persons are classified as *married* or *not married*. Persons are classified as *married* if they are reported as being married (including de facto) and their spouse was a usual resident of the household at the time of the survey.
24. *Persons attending school or a tertiary educational institution*. Persons attending school comprise those aged 15–19 years who, during the reference week, were enrolled full-time at secondary or high schools (including boarding school pupils). Persons attending a tertiary educational institution comprise those aged 15–24 years who were enrolled full-time at universities, colleges of advanced education, technical colleges, colleges of technical and further education, and theological colleges.
25. *Employment/population ratio*. For any group, the number of employed persons expressed as a percentage of the civilian population aged 15 years and over in the same group.

Statistical areas

26. The regional structure for NSW used in tables 16 to 19 is based on the Statistical Region structure of the Australian Standard Geographical Classification (ASGC). For further information concerning statistical areas, please refer to pages 48–50 and the publications *Regional Statistics, New South Wales* (1304.1) and *Australian Standard Geographical Classification* (1216.0).

Seasonal adjustment and trend estimation

27. Seasonal adjustment is a means of removing the estimated effects of normal seasonal variation from the series so that the effects of other influences on the series can be more clearly recognised. Seasonal adjustment does not aim to remove the irregular or non-seasonal influences which may be present in any particular month. This means that month-to-month movements of the seasonally adjusted estimates may not be reliable indicators of trend behaviour. For example, irregular factors unrelated to the trend account for more than half the seasonally adjusted movement with the following frequency:

- (a) Employment: 5 in 10 monthly movements
- (b) Unemployment: 7 in 10 monthly movements
- (c) Unemployment rate: 7 in 10 monthly movements
- (d) Participation rate: 9 in 10 monthly movements

28. Smoothing seasonally adjusted series produces a measure of the underlying trend by reducing the impact of the irregular component of the series. The trend estimates are derived by applying a 13-term Henderson-weighted moving average to the respective seasonally adjusted series. While this smoothing technique enables estimates to be produced which include the latest month, it does result in revisions to the most recent months as additional observations become available.

29. Seasonally adjusted series for NSW appear in this publication in Table 2. Trend estimates for NSW and ACT appear in Tables 2 and 21 respectively. Seasonally adjusted data is not available for ACT.

Reliability of the estimates

30. Estimates in this publication are subject to sampling and non-sampling errors. The Technical Note on pages 43–47 of this publication gives information on these sources of error.

Related publications

31. Users may also wish to refer to the following related publications which are available from the ABS Bookshop:

Regional Statistics, New South Wales (1304.1) issued annually

Australian Capital Territory Business Indicators (1303.8) issued monthly

Australian Capital Territory Statistical Summary (1307.8) issued annually

Australian Capital Territory at a Glance (1314.8) issued annually

A Guide to Smoothing Time Series — Estimates of 'Trend' (1316.0)

Time Series Decomposition — An Overview (1317.0)

Labour Statistics, Australia (6101.0) issued annually

A Guide to Labour Statistics (6102.0)

The Labour Force, Australia, Preliminary (6202.0) issued monthly

The Labour Force, Australia (6203.0) issued monthly

Employed Wage and Salary Earners, Australia (6248.0) issued quarterly

Information Paper: Labour Force Survey: Introduction of ANZSIC for industry data (6259.0)

Information Paper: Labour Force Survey — Sample Design (6269.0)

Information Paper: Labour Force Survey — Measuring Teenage Unemployment (6270.0)

Technical Paper: The Labour Force, Australia: Preliminary Data on Floppy Disk — Technical Details (6271.0)

Additional data

32. In addition to the labour force survey, the ABS publishes a wide range of supplementary labour market information. For details see page 39 of this publication.

33. The ABS can also make available information which is not published. This information may be made available in one or more of the following forms: microfiche, photocopy, data tape, floppy disk, computer printout, clerically-extracted tabulation. In general, a charge is made for providing unpublished information.

Symbols and other usages

A	Area
C	City
MSR	Major Statistical Region
n.e.c.	not elsewhere classified
SD	Statistical Division
SR	Statistical Region
SRS	Statistical Region Sector
*	subject to sampling variability too high for most practical purposes. See paragraph 6 of the Technical Note on Data Reliability.
—	nil or rounded to zero (including null cells)

34. Figures have been rounded and discrepancies may occur between sums of the component items and the totals shown.

TECHNICAL NOTE ON DATA RELIABILITY

Sources of error

There are a number of possible sources of error in sample surveys and these can be classified into two types: *sampling error*; and *non-sampling error*.

Non-sampling errors

2. Non-sampling errors may arise as a result of errors in the reporting, recording or processing of the data and can occur even if there is a complete enumeration of the population. Non-sampling errors can be introduced through: inadequacies in the questionnaire; non-response; inaccurate reporting by respondents; errors in the application of survey procedures; incorrect recording of answers; and errors in data entry and processing.

3. It is difficult to measure the size of the non-sampling errors and the extent of these errors could vary considerably in significance from survey to survey, and from question to question. However, every effort is made in the design of the survey and development of survey procedures to minimise the effect of these errors.

Sampling errors

4. Sampling error is the error which occurs by chance because the data were only obtained from a sample, not the entire population.

Standard error of estimates

5. One measure of the variability of estimates which occurs as a result of surveying only a sample of the population is the *standard error* (SE). There are about two chances in three that a survey estimate is within one standard error of the figure that would have been obtained if all persons had been included and about nineteen chances in twenty that it is within two standard errors. That is, there are 19 chances in 20 that the true estimate is in the range—

$$X - 2 \times SE(X) \text{ to } X + 2 \times SE(X)$$

(Where X is the estimate)

The standard error of an estimate can be obtained from Table A. Linear interpolation should be used to calculate the standard error of estimates falling between the sizes of estimates listed in the table (see example below Table A).

6. In the tables in this publication, only estimates with relative standard errors of 25 per cent or less, and percentages based on such estimates, are considered sufficiently reliable for most purposes. However, estimates and percentages with larger relative standard errors have been included and are preceded by an asterisk (e.g. * 3.4) to indicate they are subject to high standard errors and should be used with caution.

Relative standard errors

7. The standard error can also be expressed as a percentage of the estimate and this is known as the *relative standard error* (RSE). The RSE is determined by dividing the standard error of an estimate $SE(X)$ by the estimate X and expressing it as a percentage. That is,

$$RSE(X) = \frac{SE(X) \times 100}{X}$$

(where X is the estimate)

8. The look up list on the following page provides a guide for the calculation of standard errors and relative standard errors for a range of statistics.

METHODS FOR CALCULATING THE STANDARD ERRORS FOR SELECTED ESTIMATES

Note: The methods described below refer to the calculation of standard errors for NSW estimates. Standard errors of ACT estimates should be calculated from Table C, using column 2 (from September 1992) instead of Table A and column 3 (Monthly movements for December 1992–January 1993 onwards) instead of Table B.

<i>Measure of reliability to be determined</i>	<i>Method</i>
Standard errors of estimates of employed persons.	Determine the SE from Table A directly.
Standard errors of estimates of unemployed persons.	Multiply the SE from Table A by 1.06.
Standard errors of estimates of persons not in the labour force.	Multiply the SE from Table A by 1.1.
Standard errors of rates (e.g. the unemployment rate which is based on the number of unemployed persons expressed as a percentage of the number of persons in the labour force).	Determine the RSE of the numerator (X) and the denominator (Y) then apply the following formula. $RSE(X/Y) = \sqrt{[RSE(X)]^2 + [RSE(Y)]^2}$
Standard error of average duration of unemployment.	Determine the RSE for the number of persons on which the average is based and multiply this by 1.3.
Standard error of median duration of unemployment.	Determine the RSE for the number of persons on which the average is based and multiply this by 2.0.
Standard error of monthly movements.	Using Table B, look up the SE of the larger estimate.
Standard error of quarterly movements.	Determine the standard error of the larger estimate (using Table A) and multiply this by 1.11.
Standard error of annual movements.	Determine the standard error of the larger estimate (using Table A) and multiply this by 1.3.

Linear interpolation

Linear interpolation is used to determine the standard error of an estimate which falls between two values listed in the *size of estimate* column in Tables A or B. Linear interpolation is best described using an example. In February 1995, there were 600,700 (X_e) employed persons working part-time in New South Wales. This estimate falls between the values 500,000 (X_l) and 1,000,000 (X_u) in Table A.

2. The standard error of the estimate is determined as follows.

$$\begin{aligned}
 \text{Firstly, calculate } F &= \frac{X_e - X_l}{X_u - X_l} \\
 &= \frac{600,700 - 500,000}{1,000,000 - 500,000} \\
 &= 0.20
 \end{aligned}$$

3. Secondly, calculate the standard error of the estimate, $SE(X_e)$ thus,

$$\begin{aligned}
 SE(X_e) &= SE(X_l) + (F \times [SE(X_u) - SE(X_l)]) \\
 &= 8,800 + (0.20 \times [11,300 - 8,800]) \\
 &= 9,300
 \end{aligned}$$

4. Therefore the standard error of the number of employed persons in February 1995 working part-time in New South Wales (600,700) is 9,300.

TABLE A. STANDARD ERRORS OF ESTIMATES, REGIONS OF NSW FROM SEPTEMBER 1992 (a)

	Regions in Sydney (MSR)							
Size of estimate	NSW: Sydney (MSR); Balance of NSW (MSR)	Inner Sydney and Inner Western Sydney (SRs)	Inner Sydney (SR)	Eastern Suburbs (SR)	St George-Sutherland (SR)	Canterbury-Bankstown (SR)	Fairfield-Liverpool and Outer South Western Sydney (SRs)	Fairfield-Liverpool (SR)
500	420	340	330	300	300	280	330	290
1,000	590	500	480	430	430	410	470	410
3,000	1,000	890	860	770	780	740	850	750
5,000	1,300	1,150	1,150	1,000	1,050	970	1,100	980
10,000	1,750	1,700	1,650	1,500	1,500	1,400	1,650	1,450
20,000	2,400	2,450	2,450	2,200	2,200	2,100	2,350	2,100
50,000	3,550	4,050	4,050	3,650	3,700	3,500	3,850	3,500
100,000	4,750	5,900	6,000	5,400	5,500	5,200	5,600	5,200
200,000	6,200	8,600	8,900	8,000	8,100	7,700	8,200	7,700
300,000	7,300	10,700	11,300	10,100	10,200	9,700	10,200	9,800
500,000	8,800	14,200	15,200	13,600	13,800	13,000	13,500	13,100
1,000,000	11,300							
2,000,000	14,300							
5,000,000	19,300							

Regions in Sydney (MSR)—continued							
	Central Western Sydney (SR)	Outer Western Sydney (SR)	Blacktown Baulkham Hills (SR)	Lower Northern Sydney (SR)	Hornsby Ku-ring-gai (SR)	Northern Beaches (SR)	Gosford-Wyong (SR)
500	300	310	270	360	320	250	330
1,000	440	450	390	520	460	360	470
3,000	790	820	700	940	830	650	850
5,000	1,050	1,100	920	1,250	1,100	860	1,150
10,000	1,500	1,550	1,350	1,800	1,600	1,250	1,650
20,000	2,250	2,300	1,950	2,650	2,350	1,850	2,400
50,000	3,750	3,850	3,300	4,450	3,900	3,100	4,050
100,000	5,500	5,700	4,850	6,500	5,800	4,550	6,000
200,000	8,200	8,500	7,200	9,700	8,600	6,800	8,900
300,000	10,300	10,700	9,100	12,300	10,900	8,500	11,200

Regions in Balance of NSW (MSR)								
	Hunter (SR)	Newcastle (SRs)	Illawarra and South Eastern (SRs)	Illawarra (SR)	Wollongong (SRs)	Richmond-Tweed and Mid-North Coast (SRs)	Northern, Far West-North Western and Central West (SRs)	Murray Murrumbidgee (SR)
500	350	330	330	310	270	370	360	360
1,000	500	480	480	450	390	530	520	520
3,000	900	870	870	810	710	950	940	940
5,000	1,200	1,150	1,150	1,050	940	1,250	1,250	1,250
10,000	1,700	1,650	1,650	1,550	1,350	1,850	1,800	1,800
20,000	2,500	2,450	2,400	2,250	2,000	2,700	2,650	2,650
50,000	4,100	4,100	3,950	3,700	3,350	4,500	4,450	4,400
100,000	6,000	6,000	5,700	5,400	4,950	6,600	6,600	6,500
200,000	8,700	9,000	8,400	7,800	7,300	9,900	9,800	9,700
300,000	10,900	11,300	10,400	9,800	9,300	12,400	12,300	12,300

(a) For standard errors for earlier periods, see previous issues of this publication.

TABLE B. STANDARD ERRORS OF MONTH TO MONTH MOVEMENTS, REGIONS OF NSW
FROM DECEMBER 1992-JANUARY 1993 ONWARDS (a)

Regions in Sydney (MSR)								
Size of estimate	NSW; Sydney (MSR); Balance of NSW (MSR)	Inner Sydney and Inner Western Sydney (SRs)	Inner Sydney (SR)	Eastern Suburbs (SR)	St George - Sutherland (SR)	Canterbury- Bankstown (SR)	Fairfield- Liverpool and Outer Sydney (SRs)	Fairfield Liverpool (SR)
500	540	330	270	260	240	240	290	220
1,000	690	440	360	350	330	330	390	300
3,000	1,050	700	600	580	540	540	630	500
5,000	1,250	870	750	730	680	680	780	630
10,000	1,600	1,150	1,050	990	930	930	1,050	860
20,000	2,050	1,550	1,400	1,350	1,250	1,250	1,400	1,150
50,000	2,900	2,300	2,150	2,050	1,950	1,900	2,050	1,750
100,000	3,700	3,100	2,900	2,800	2,650	2,650	2,800	2,400
200,000	4,750	4,200	4,000	3,850	3,600	3,600	3,750	3,300
300,000	5,500	5,000	4,800	4,600	4,350	4,300	4,400	4,400
500,000	6,700	6,200	6,000	5,800	5,400	5,400	5,500	5,000
1,000,000	8,600							
2,000,000	11,100							
5,000,000	15,500							

Regions in Sydney (MSR)—continued							
	Central Western Sydney (SR)	Outer Western Sydney (SR)	Blacktown- Baulkham Hills (SR)	Lower Northern Sydney (SR)	Hornsby- Ku-ring-gai (SR)	Northern Beaches (SR)	Gosford- Wyong (SR)
500	220	240	250	290	230	210	270
1,000	300	330	340	400	310	280	380
3,000	490	540	560	660	510	470	620
5,000	610	680	700	830	640	590	780
10,000	840	940	960	1,150	870	800	1,050
20,000	1,150	1,300	1,300	1,550	1,200	1,100	1,450
50,000	1,750	1,950	2,000	2,350	1,800	1,650	2,200
100,000	2,350	2,650	2,700	3,200	2,450	2,250	3,000
200,000	3,250	3,600	3,700	4,400	3,400	3,100	4,100
300,000	3,900	4,350	4,450	5,300	4,050	3,750	4,950

Regions in Balance of NSW (MSR)								
	Hunter (SR)	Newcastle (SRS)	Illawarra and South Eastern (SRs)	Illawarra (SR)	Wollongong (SRS)	Richmond- Tweed and Mid-North Coast (SRs)	Northern, Far West North Western and Central West (SRs)	Murray- Murrumbidgee (SR)
500	320	280	340	340	260	300	340	290
1,000	430	390	460	460	350	420	470	400
3,000	690	640	740	730	580	680	760	660
5,000	860	800	910	910	730	860	960	830
10,000	1,150	1,100	1,250	1,200	990	1,200	1,300	1,150
20,000	1,550	1,500	1,650	1,650	1,350	1,600	1,800	1,550
50,000	2,300	2,250	2,450	2,400	2,050	2,450	2,750	2,350
100,000	3,100	3,100	3,250	3,250	2,800	3,350	3,750	3,200
200,000	4,150	4,250	4,400	4,350	3,850	4,550	5,100	4,350
300,000	4,900	5,100	5,200	5,200	4,600	5,500	6,100	5,200

(a) For standard errors for earlier periods, see previous issues of this publication.

TABLE C. STANDARD ERRORS OF ESTIMATES, ACT

<i>Size of estimate</i>	<i>From September 1992 (a)</i>	<i>Monthly movements for December 1992– January 1993 onwards (a)</i>
500	180	150
1,000	240	220
3,000	390	320
5,000	490	390
10,000	640	500
20,000	840	640
50,000	1,200	900
100,000	1,550	1,150
200,000	1,950	1,500
300,000	2,250	1,750

(a) For standard errors for earlier periods, see *The Labour Force, Australia* (6203.0)

APPENDIX. REGIONS OF NSW AND THEIR STATISTICAL LOCAL AREAS

SYDNEY (MSR)**Inner Sydney and Inner Western Sydney (SRs)**

Ashfield (A)
 Botany (A)
 Burwood (A)
 Concord (A)
 Drummoyne (A)
 Leichhardt (A)
 Marrickville (A)
 South Sydney (C)
 Strathfield (A)
 Sydney (C) — Inner
 Sydney (C) — Remainder

Inner Sydney (SR)

Botany (A)
 Leichhardt (A)
 Marrickville (A)
 South Sydney (C)
 Sydney (C) — Inner
 Sydney (C) — Remainder

Eastern Suburbs (SR)

Randwick (C)
 Waverley (A)
 Woollahra (A)

St George—Sutherland (SR)

Hurstville (C)
 Kogarah (A)
 Rockdale (A)
 Sutherland Shire (A)

Canterbury—Bankstown (SR)

Bankstown (C)
 Canterbury (A)

Fairfield—Liverpool and**Outer South Western Sydney (SRs)**

Camden (A)
 Campbelltown (C)
 Fairfield (C)
 Liverpool (C)
 Wollondilly (A)

Fairfield—Liverpool (SR)

Fairfield (C)
 Liverpool (C)

Central Western Sydney (SR)

Auburn (A)
 Holroyd (C)
 Parramatta (C)

Outer Western Sydney (SR)

Blue Mountains (C)
 Hawkesbury (C)
 Penrith (C)

Blacktown—Baulkham Hills (SR)

Baulkham Hills (A)
 Blacktown (C)

Lower Northern Sydney (SR)

Hunter's Hill (A)
 Lane Cove (A)
 Mosman (A)
 North Sydney (A)
 Ryde (C)
 Willoughby (C)

Hornsby—Ku-ring-gai (SR)

Hornsby (A)
 Ku-ring-gai (A)

Northern Beaches (SR) (a)

Manly (A)
 Pittwater (A)
 Warringah (A)

Gosford—Wyong (SR)

Gosford (C)
 Wyong (A)

BALANCE OF NSW (MSR) (b)**Hunter (SR)**

Cessnock (C)
 Dungog (A)
 Gloucester (A)
 Great Lakes (A)
 Lake Macquarie (C)
 Maitland (C)
 Merriwa (A)
 Murrumbidgee (A)
 Muswellbrook (A)
 Newcastle (C) — Inner
 Newcastle (C) — Remainder
 Port Stephens (A)
 Scone (A)
 Singleton (A)

Newcastle (SRS)

Cessnock (C)
 Lake Macquarie (C)
 Maitland (C)
 Newcastle (C) — Inner
 Newcastle (C) — Remainder
 Port Stephens (A)

Illawarra and South Eastern (SRs)

Bega Valley (A)
 Bombala (A)
 Boorowa (A)
 Cooma—Monaro (A)
 Crookwell (A)
 Eurobodalla (A)
 Goulburn (C)
 Gunning (A)
 Harden (A)
 Kiama (A)
 Mulwaree (A)
 Queanbeyan (C)
 Shellharbour (A)
 Shoalhaven (C)
 Snowy River (A)
 Tallaganda (A)
 Wingecarribee (A)

Wollongong (C)
Yarrowlumla (A)
Yass (A)
Young (A)

Illawarra (SR)

Kiama (A)
Shellharbour (A)
Shoalhaven (C)
Wingecaribee (A)
Wollongong (C)

Wollongong (SRS)

Kiama (A)
Shellharbour (A)
Wollongong (C)

Richmond-Tweed and Mid-North Coast (SRs)

Ballina (A)
Bellingen (A)
Byron (A)
Casino (A)
Coffs Harbour (C)
Copmanhurst (A)
Grafton (C)
Greater Taree (C)
Hastings (A)
Kempsey (A)
Kyogle (A)
Lismore (C)
Lord Howe Island
Maclean (A)
Nambucca (A)
Nymboida (A)
Richmond River (A)
Tweed (A) — Part A
Tweed (A) — Part B
Ulmarra (A)

Northern, Far West—North Western and Central West (SRs) (b)

Armidale (C)
Barraba (A)
Bathurst (C)
Bingara (A)
Bland (A)
Blayney (A) — Part A
Blayney (A) — Part B
Bogan (A)
Bourke (A)
Brewarrina (A)
Cabonne (A) — Part A
Cabonne (A) — Part B
Cabonne (A) — Part C
Cobar (A)
Coolah (A)
Coonabarabran (A)
Coonamble (A)
Cowra (A)
Dubbo (C)
Dumaresq (A)
Evans (A) — Part A
Evans (A) — Part B

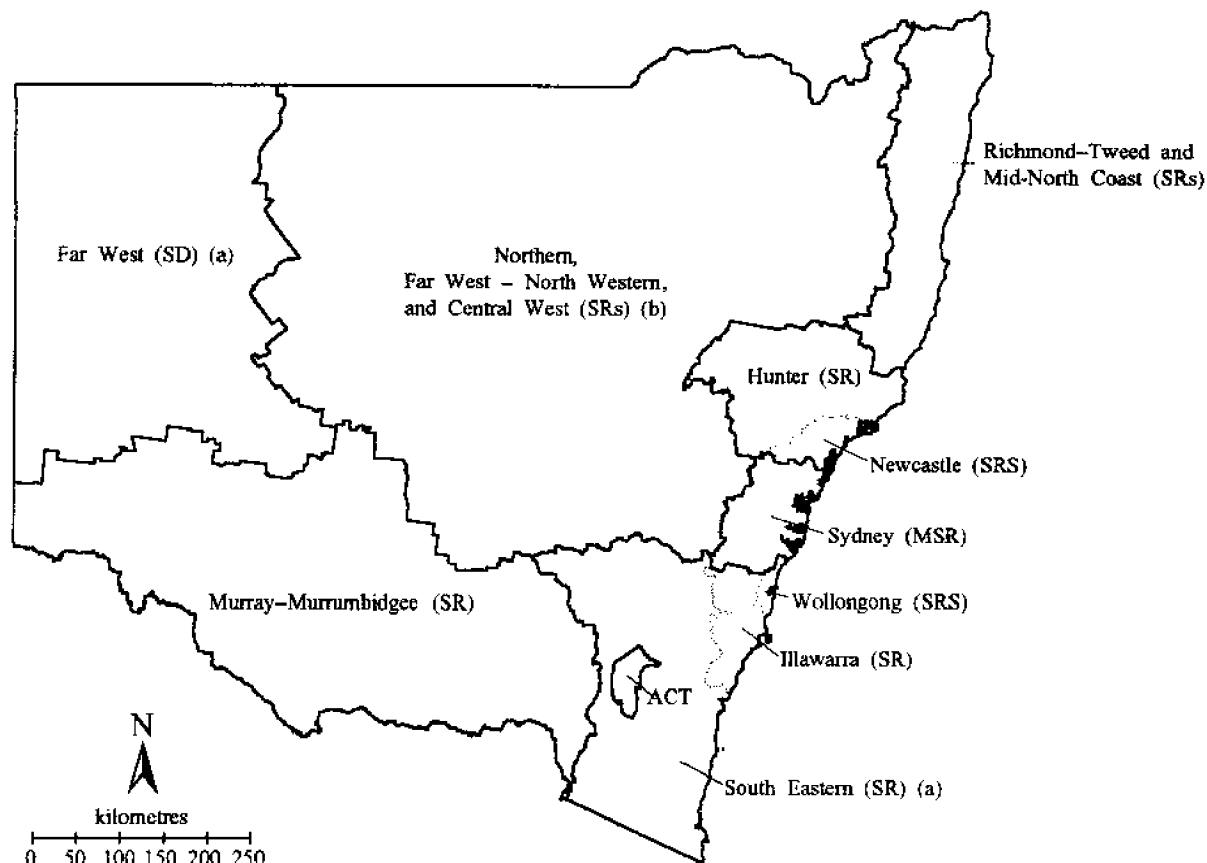
Forbes (A)
Gilgandra (A)
Glen Innes (A)
Greater Lithgow (C)
Gunnedah (A)
Guyra (A)
Inverell (A) — Part A
Inverell (A) — Part B
Lachlan (A)
Manilla (A)
Moree Plains (A)
Mudgee (A)
Narrabri (A)
Narromine (A)
Nundle (A)
Oberon (A)
Orange (C)
Parkes (A)
Parry (A)
Quirindi (A)
Rylstone (A)
Severn (A)
Tamworth (C)
Tenterfield (A)
Uralla (A)
Walcha (A)
Walgett (A)
Warren (A)
Weddin (A)
Wellington (A)
Yallaroi (A)

Murray-Murrumbidgee (SR)

Albury (C)
Balranald (A)
Berrigan (A)
Carrathool (A)
Conargo (A)
Coolamon (A)
Cootamundra (A)
Corowa (A)
Culcairn (A)
Deniliquin (A)
Griffith (C)
Gundagai (A)
Hay (A)
Holbrook (A)
Hume (A)
Jerilderie (A)
Juncie (A)
Lecton (A)
Lockhart (A)
Murray (A)
Murrumbidgee (A)
Narrandera (A)
Temora (A)
Tumbarumba (A)
Turnut (A)
Urana (A)
Wagga Wagga (C)
Wakool (A)
Wentworth (A)
Windouran (A)

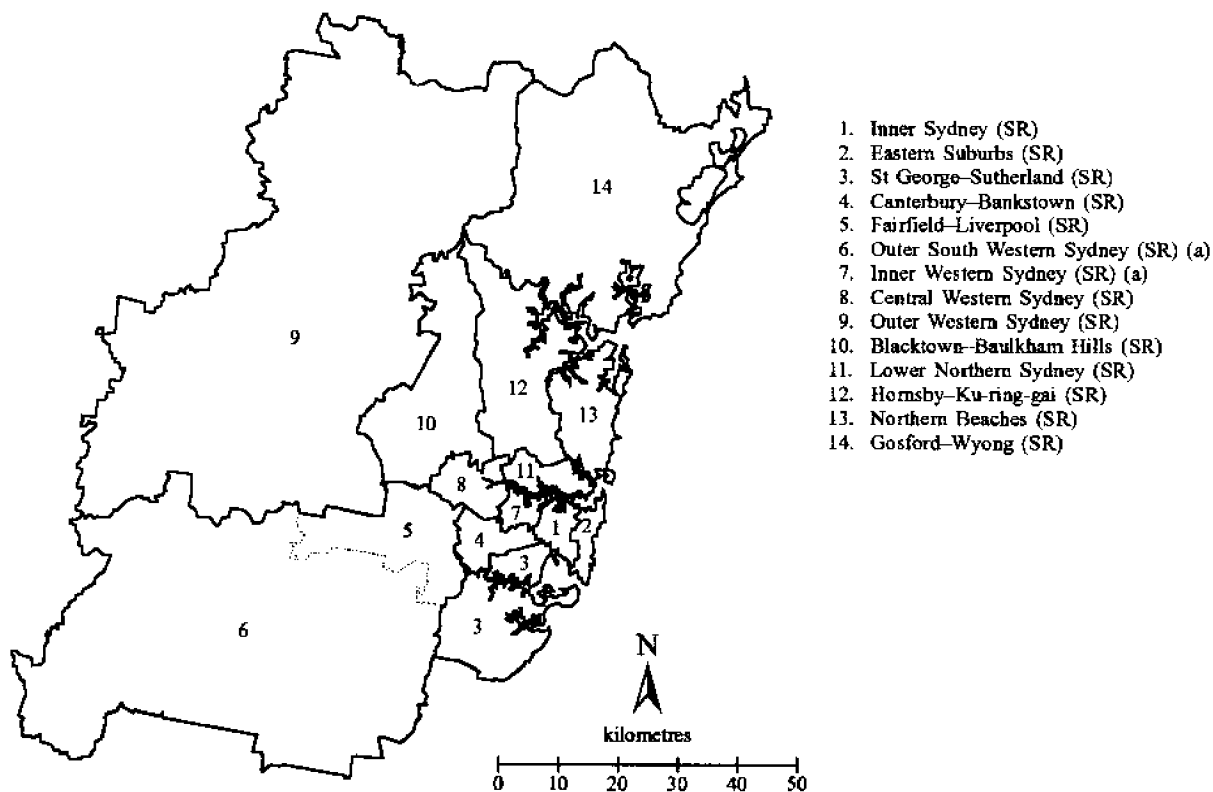
(a) Previously Manly-Warringah (SR). (b) The statistical local areas which comprise Far West (SD)—Broken Hill (C), Central Darling (A), and Unincorporated Far West—are included in Balance of NSW (MSR), but excluded from Northern, Far West—North Western and Central West (SRs).

REGIONS OF NSW



(a) Not published separately. (b) Excludes Far West (SD).

REGIONS OF SYDNEY (MSR)



(a) Not published separately.



For more information ...

The ABS publishes a wide range of statistics and other information on Australia's economic and social conditions. Details of what is available in various publications and other products can be found in the *ABS Catalogue of Publications and Products* available at all ABS Offices (see below for contact details).

Information Consultancy Service

Information tailored to special needs of clients can be obtained from the Information Consultancy Service available at ABS Offices (see Information Inquiries below for contact details).

National Dial-a-Statistic Line

0055 86 400

(Steadycom P/L: premium rate 25c/21.4 secs.)

This number gives you 24 hour access, 365 days a year for a range of statistics.

Electronic Data Services

A large range of data is available via on-line services, diskette, magnetic tape, tape cartridge and CD ROM. For more details about these electronic data services, contact any ABS Office (see below).

Bookshops and Subscriptions

There is a large number of ABS publications available from ABS bookshops (see below Bookshop Sales for contact details). The ABS also provides a subscription service through which nominated publications are supplied by mail on a regular basis (telephone Subscription Service toll free on 008 02 0608 Australia wide).

Sales and Inquiries

Regional Offices	Information Inquiries	Bookshop Sales
SYDNEY (02)	268 4611	268 4620
MELBOURNE (03)	615 7000	615 7829
BRISBANE (07)	222 6351	222 6350
PERTH (09)	360 5140	360 5307
ADELAIDE (08)	237 7100	237 7582
HOBART (002)	205 800	205 800
CANBERRA (06)	207 0326	207 0326
DARWIN (089)	432 111	432 111
National Office		
ACT (06)	252 6007	008 020 608

ABS Email Addresses

Keylink	STAT.INFO/ABS
X.400	(C:AU,A:TELMEMO,O:ABS,SN:INFO,FN:STAT)
Internet	STAT.INFO@ABS. TELEMEMO.AU



Information Services, ABS, GPO Box 796, Sydney NSW 2001
or any ABS office



2620110002954
ISSN 1322-0179